

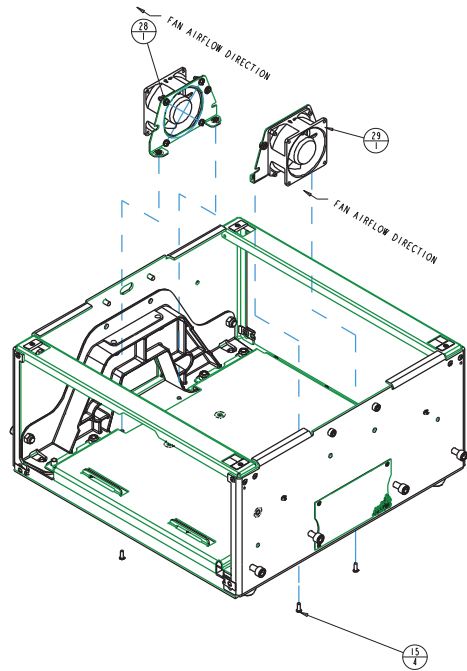
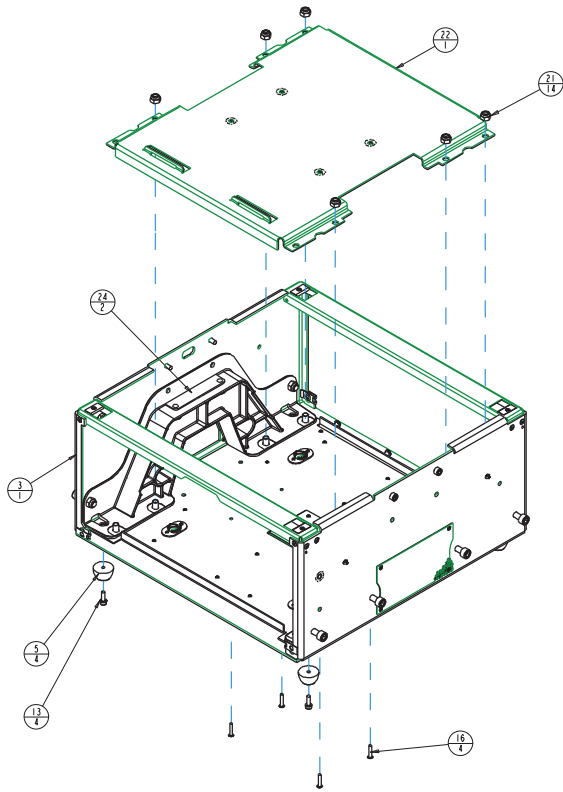
REV.	DESCRIPTION	DATE	ENG	ECO #	APPR
1	CREATE DRAWING	21SEP07	KLB		MB
2	UPDATE VIEWS AND BOM BALLOONS	04DEC07	PP		MB
3	ADD ITEMS 27 THRU 33, ADD CHASSIS INTAKE FAN ASSEMBLY, ADD 4 EACH ITEM 12	21FEB08	PP		MB
4	ADD ITEMS 4 & 6, REMOVE REDUNDANT COVERS FROM BOM	17MAR08	PP		MB
5	HARDWARE CHANGES PER FACTORY RECOMMENDATIONS	17APR08	PP		MB
6	ADDITIONAL HARDWARE CHANGES	07MAY08	PP		MB
7	REVISION UPDATE ON ITEM 32	29MAY08	PP		MB

36	1	CLIP_50_PUSH_ON_NY	90701271	CLIP, WIRE .50 DIA, PUSH MOUNT	
34	1	TZA010	INTERNAL 3	POWER SUPPLY TRAY ASSEMBLY, P23	
33	1	TZA005	INTERNAL 7	POWER SUPPLY TRAY ASSEMBLY, P51	
32	1	TZA034	INTERNAL 4	PANEL ASSEMBLY, I/O, ELECTRONIC ENCLOSURE, ME44	
31	1	TZA030	INTERNAL 5	PANEL ASSEMBLY, FRONT, ELECT ENCL, ME44	
30	1	TWA081	INTERNAL 2	PAN BEARING COMPLETE SG	
29	1	TWA811	INTERNAL 3	FAN ASSEMBLY, INTAKE	
28	1	TWA065	INTERNAL 4	FAN ASSEMBLY, EXHAUST	
27	1	TZA036	INTERNAL 2	CABLE ROUTING, ASSEMBLY	
26	1	TZA035	INTERNAL 7	ASSEMBLY, POWER SUPPLY, 40V	
25	2	TZA54	99310478	LABEL, SIDE, TOP BOX, ME44	
24	2	DB250	99260452	SUPPORT, BEAM, CAST TOP BOX, DL2	
23	2	TW201	99220033	COVER, SIDE, TOP BOX DL2	
22	1	TZ111	99080345	PLATE, MOUNTING, POWER SUPPLY, ME44	
21	14	NUT_M8_LOCK_NY	90703105	NUT, M8-1.25, NYLOC	
20	3	NUTM8KEP	91201206	NUT, M8 KEPS	
19	8	SCREWM8AC30SS	911100830	SCREW, M8 SOCKET CAP 30 SS	
18	6	SCREWM8AC16SSP	911100816	SCREW, M8 SOCKET CAP 16 SS W/PATCH	
17	6	SCREWM8AC16SSP	911100816	SCREW, M8 SOCKET CAP 16 SS W/PATCH	
16	4	SCREWM8AC12SSP	911100612	SCREW, M8 SOCKET CAP 12 SS W/PATCH	
15	4	SCREWM4AB20BZ	91010420	SCREW, M4 BUTTON 20 BZ W/PATCH	
14	4	SCREWM4AB12BZ	91010412	SCREW, M4 BUTTON 12 BZ W/PATCH	
13	4	SCREWM5AC16W-BZ	91000516	SCREW, M5 SOCKET CAP 16 BZ SEMS	
12	2	SCREWM4AC06W-BZ	91000406	SCREW, M4 SOCKET CAP 06 BZ SEMS	
11	4	SW214	90720005	A HANDLE, SMALL W/ LOGO	
10	4	SCREWM6-19PP380BTIPE-BZ	90709117	SCREW, #19 PHIL PAN PLASTIC 3/8 BZ	
9	4	SCREW10-14PP380TL-SZ	90709124	SCREW 10-14 PHIL PAN 3/8 PLASTIC	
8	8	WASHER318_500_040	90706101	WASHER, DAD 1/8 318 ID 1/8 500 GD	
7	2	TW348	90202272	STANDOFF, 1/2 HEX, MB, FF 3.93TL	
6	1	CLIP_75_PUSH_ON_NY	90701358	CLIP, WIRE .75 DIA, PUSH MOUNT	
5	4	RUBBER_FOOT	90410089	FOOT, RUBBER STC/IN LONG	
4	1	DB512	80260015	FILTER, INTAKE TOP BOX DL2	
3	1	TWA009	80110041	A CHASSIS ASSY, TOP BOX ME41	
2	2	DB4024	80110035	D COVER, ASSY UPPER, TOP BOX DL2	
1	2	DB306	80071851	B STUD, PANEL RETAINER, DL2	
ITEM NO.	QTY.	FILENAME	PART NO.	REV	DESCRIPTION
BILL OF MATERIALS					


UNLESS OTHERWISE SPECIFIED:	RELEASE DATE:	CE:	High End 2105 GRACY FARMS LANE AUSTIN, TEXAS 78758 (512) 836-2242 FAX (512) 837-4128 ***** http://www.highend.com	 LIGHTWAVE RESEARCH	
DIMENSIONAL TOLERANCES:	ENG: MIKE BELL	QA:			
0 PLACE DECIMAL = ±0.38	ME:	DRW: PETE PHILLIPS			
1 PLACE DECIMAL = ±0.25	MEG:				
2 PLACE DECIMALS = ±0.13	DESCRIPTION:				
MILES = ±0.5	ELECTRONICS ASSEMBLY, COMPLETE, ME44				
FOR PAINTED PARTS REFER TO ENG. SPEC. MANUAL W-0582	MATERIAL:		FINISH:	NONE	
ALL COMPONENTS, MATERIALS AND FINISHES TO BE AS COMPLIANT	CHARTED				
MIN. SHEET	INTERPRET DIMENSIONS PER	SI	PART NO.	DRAWING NO.	REV.
LAYERS	ASME Y14.5M-1994	METRIC	INTERNAL	TZA002	7
TOLERANCES	THIRD ANGLE PROJECTION	A1	DO NOT SCALE	SCALE: 0.160	SHEET: 1 OF 5
VOLUME	DIMENSIONS ARE IN MILLIMETERS				

PROPRIETARY NOTICE

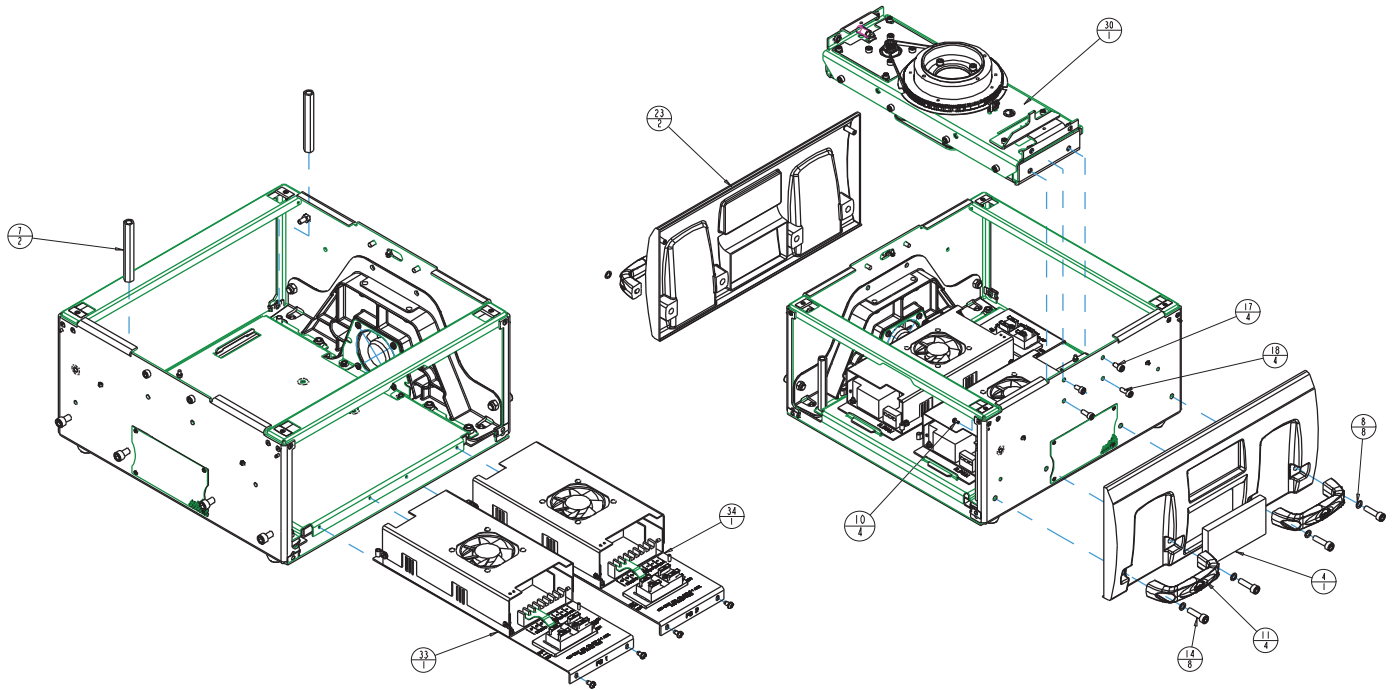
THIS DOCUMENT CONTAINS CONFIDENTIAL AND PROPRIETARY INFORMATION OF HIGH END SYSTEMS, INC., (A 50 CMA LIGHTWAVE RESEARCH) AND IS GIVEN TO THE RECEIVER IN CONFIDENCE. THE RECEIVER ACCEPTS AND AGREES THAT, EXCEPT AS AUTHORIZED BY HIGH END SYSTEMS, THE RECEIVER WILL NOT PERMIT THE USE OF THE DOCUMENT OR ANY COPY THEREOF OR THE INFORMATION THEREIN, WILL NOT COPY OR FURTHER COPYING THE DOCUMENT, WILL NOT DISCLOSE TO OTHERS EITHER THE DOCUMENT OR THE INFORMATION THEREIN, AND WILL UPON COMPLETION OF THE NEED TO RETURN THE DOCUMENT, OR UPON DEMAND, RETURN THE DOCUMENT, WITHOUT RETAINING ANY OF THE INFORMATION CONTAINED THEREIN IN ANY FORM WHATSOEVER.


**PROPRIETARY NOTICE**

THIS DOCUMENT CONTAINS CONFIDENTIAL AND PROPRIETARY INFORMATION OF HIGH END SYSTEMS INC., ALSO ORA (LIGHTWAVE RESEARCH) AND IS GIVEN TO THE RECEIVER IN CONFIDENCE. THE RECEIVER ACCEPTS AND AGREES THAT, EXCEPT AS AUTHORIZED BY HIGH END SYSTEMS, THE RECEIVER WILL NOT PERMIT THE USE OF THE DOCUMENT OR ANY COPY THEREOF OR THE INFORMATION THEREIN, WILL NOT COPY OR PRINT, COPYING THE DOCUMENT WILL NOT DISCLOSE TO OTHERS EITHER THE DOCUMENT OR THE INFORMATION THEREIN, AND WILL UPON COMPLETION OF THE NEED TO RETAIN THE DOCUMENT, OR UPON DEMAND, RETURN THE DOCUMENT WITHOUT RETAINING ANY OF THE INFORMATION CONTAINED THEREIN IN ANY FORM WHATSOEVER.

UNLESS OTHERWISE SPECIFIED	RELEASE DATE:	CE:	High End	2100 GRACY FARMS LANE	 LIGHTWAVE RESEARCH
DIMENSIONAL TOLERANCES:	ENG: MIKE BELL	DA:		AUSTIN, TEXAS 78758	
0 PLACE DECIMAL = ±0.38	ME:			(512) 836-2242	
1 PLACE DECIMAL = ±0.25	MEG:	DRW: PETE PHILLIPS		FAX (512) 837-4128	
2 PLACE DECIMALS = ±0.13				***** http://www.highend.com	
ANGLES = ±0.5°	DESCRIPTION:				
FOR PAINTED PARTS REFER TO	ELECTRONICS ASSEMBLY, COMPLETE, ME4				
ENG. SPEC. MANUAL W-0582	MATERIALS:				
ALL COMPONENTS, MATERIALS AND FINISHES TO BE AS COMPLIANT	CHARTED				
W/1: SHAF	INTERPRET DIMENSIONS PER				
W/2: SHAF	ASME Y14.5M-1994				
W/3: SHAF	THIRD ANGLE PROJECTION				
W/4: SHAF	SI METRIC				
W/5: SHAF	A1				
W/6: SHAF	DIMENSIONS ARE IN MILLIMETERS				
W/7: SHAF					
W/8: SHAF					
W/9: SHAF					
W/10: SHAF					
W/11: SHAF					
W/12: SHAF					
W/13: SHAF					
W/14: SHAF					
W/15: SHAF					
W/16: SHAF					
W/17: SHAF					
W/18: SHAF					
W/19: SHAF					
W/20: SHAF					
W/21: SHAF					
W/22: SHAF					
W/23: SHAF					
W/24: SHAF					
W/25: SHAF					
W/26: SHAF					
W/27: SHAF					
W/28: SHAF					
W/29: SHAF					
W/30: SHAF					
W/31: SHAF					
W/32: SHAF					
W/33: SHAF					
W/34: SHAF					
W/35: SHAF					
W/36: SHAF					
W/37: SHAF					
W/38: SHAF					
W/39: SHAF					
W/40: SHAF					
W/41: SHAF					
W/42: SHAF					
W/43: SHAF					
W/44: SHAF					
W/45: SHAF					
W/46: SHAF					
W/47: SHAF					
W/48: SHAF					
W/49: SHAF					
W/50: SHAF					
W/51: SHAF					
W/52: SHAF					
W/53: SHAF					
W/54: SHAF					
W/55: SHAF					
W/56: SHAF					
W/57: SHAF					
W/58: SHAF					
W/59: SHAF					
W/60: SHAF					
W/61: SHAF					
W/62: SHAF					
W/63: SHAF					
W/64: SHAF					
W/65: SHAF					
W/66: SHAF					
W/67: SHAF					
W/68: SHAF					
W/69: SHAF					
W/70: SHAF					
W/71: SHAF					
W/72: SHAF					
W/73: SHAF					
W/74: SHAF					
W/75: SHAF					
W/76: SHAF					
W/77: SHAF					
W/78: SHAF					
W/79: SHAF					
W/80: SHAF					
W/81: SHAF					
W/82: SHAF					
W/83: SHAF					
W/84: SHAF					
W/85: SHAF					
W/86: SHAF					
W/87: SHAF					
W/88: SHAF					
W/89: SHAF					
W/90: SHAF					
W/91: SHAF					
W/92: SHAF					
W/93: SHAF					
W/94: SHAF					
W/95: SHAF					
W/96: SHAF					
W/97: SHAF					
W/98: SHAF					
W/99: SHAF					
W/100: SHAF					

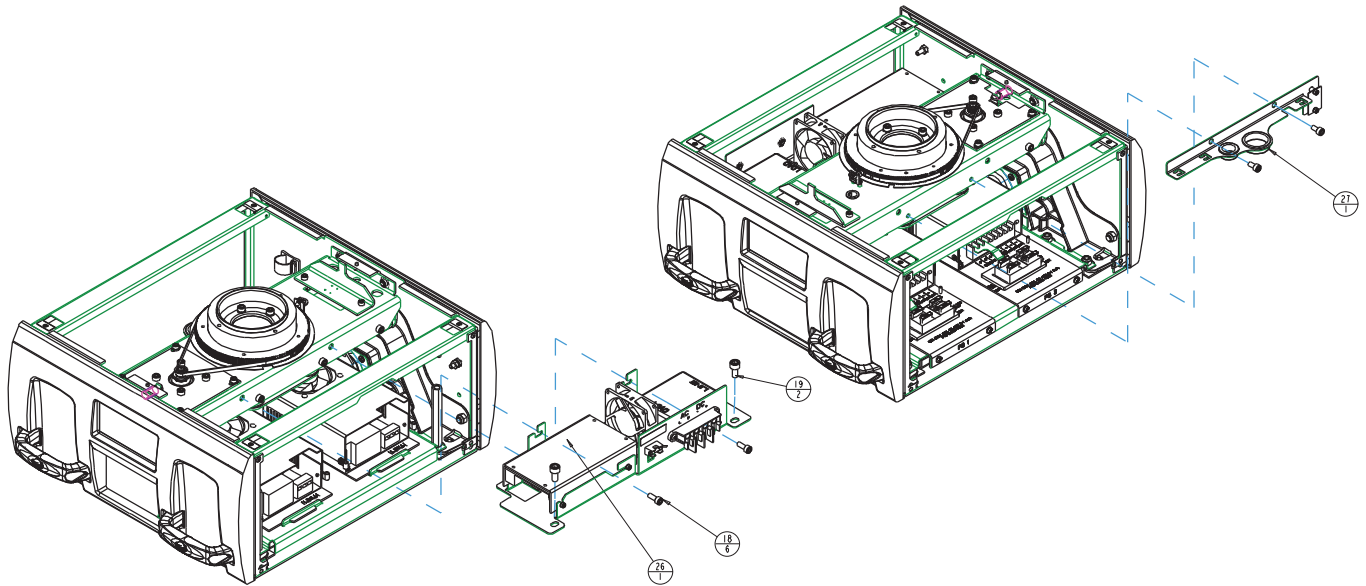
PART NO: INTERNAL TZA002
 DRAWING NO: TZA002
 SCALE: 0.160
 SHEET: 2 OF 5
 REV: 7



UNLESS OTHERWISE SPECIFIED:	RELEASE DATE:	CE:	High End	2100 GRACY FARMS LANE	 LIGHTWAVE RESEARCH
DIMENSIONAL TOLERANCES:	ENG: MIKE BELL	QA:		AUSTIN, TEXAS 78758	
0 PLACE DECIMAL = ±0.38	ME:			(512) 836-2242	
1 PLACE DECIMAL = ±0.25	MEG:	DRW: PETE PHILLIPS		FAX (512) 837-4128	
2 PLACE DECIMALS = ±0.13				***** http://www.highend.com	
ANGLES = ±0.5°	DESCRIPTION:				
FOR PAINTED PARTS REFER TO	ELECTRONICS ASSEMBLY, COMPLETE, ME4				
ENG. SPEC. MANUAL W-0582	MATERIAL:				
ALL COMPONENTS, MATERIALS AND	CHARTED				
FINISHES TO BE AS COMPLIANT					
WIR. SHT:	INTERPRET DIMENSIONS PER	SI	PART NO.	DRAWING NO.	REV.
MFG. SHT:	ASME Y14.5M-1994	METRIC	INTERNAL	TZA002	7
LAYERS:	THIRD ANGLE PROJECTION	A1	DO NOT SCALE	SCALE: 0.160	SHEET: 3 OF 5
ETCHINGS:	DIMENSIONS ARE IN MILLIMETERS				
VOLUME:					

PROPRIETARY NOTICE

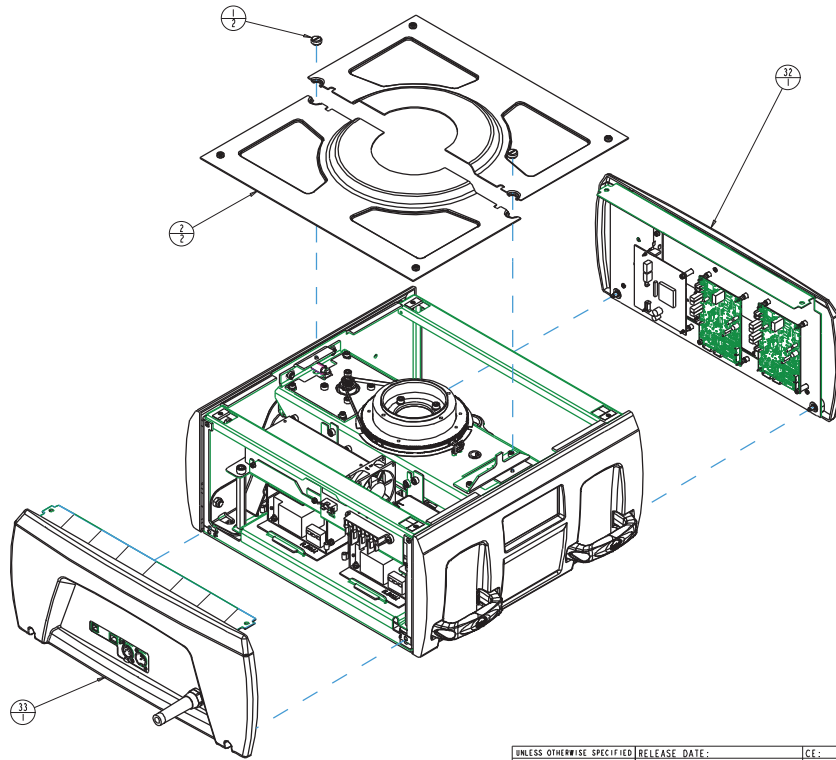
THIS DOCUMENT CONTAINS CONFIDENTIAL AND PROPRIETARY INFORMATION OF HIGH END SYSTEMS, INC., (ALSO DBA LIGHTWAVE RESEARCH) AND IS GIVEN TO THE RECEIVER IN CONFIDENCE. THE RECEIVER ACCEPTS AND AGREES THAT, EXCEPT AS AUTHORIZED BY HIGH END SYSTEMS, THE RECEIVER WILL NOT PERMIT THE USE OF THE DOCUMENT OR ANY COPY THEREOF OR THE INFORMATION THEREIN, WILL NOT COPY OR FURTHER COPYING THE DOCUMENT, WILL NOT DISCLOSE TO OTHERS EITHER THE DOCUMENT OR THE INFORMATION THEREIN, AND WILL UPON COMPLETION OF THE NEED TO RETAIN THE DOCUMENT, OR UPON DEMAND, RETURN THE DOCUMENT WITHOUT RETAINING ANY OF THE INFORMATION CONTAINED THEREIN IN ANY FORM WHATSOEVER.



PROPRIETARY NOTICE

THIS DOCUMENT CONTAINS CONFIDENTIAL AND PROPRIETARY INFORMATION OF HIGH END SYSTEMS, INC., (ALSO DBA LIGHTWAVE RESEARCH) AND IS GIVEN TO THE RECEIVER IN CONFIDENCE. THE RECEIVER ACCEPTS AND AGREES THAT, EXCEPT AS AUTHORIZED BY HIGH END SYSTEMS, THE RECEIVER WILL NOT PERMIT THE USE OF THE DOCUMENT OR ANY COPY THEREOF OR THE INFORMATION THEREIN, WILL NOT COPY OR FURTHER COPY THE DOCUMENT, WILL NOT DISCLOSE TO OTHERS EITHER THE DOCUMENT OR THE INFORMATION THEREIN, AND WILL UPON COMPLETION OF THE NEED TO RETAIN THE DOCUMENT, OR UPON DEMAND, RETURN THE DOCUMENT WITHOUT RETAINING ANY OF THE INFORMATION CONTAINED THEREIN IN ANY FORM WHATSOEVER.

UNLESS OTHERWISE SPECIFIED: DIMENSIONAL TOLERANCES: 0 PLACE DECIMAL = ±0.38 1 PLACE DECIMAL = ±0.25 2 PLACE DECIMALS = ±0.13 ANGLES = ±0.5°	RELEASE DATE: ENGR: MIKE BELL ME: MEG: DESCRIPTION: ELECTRONICS ASSEMBLY, COMPLETE, ME4	CE: DA: DEW: PETE PHILLIPS	High End 2100 GRACY FARMS LANE AUSTIN, TEXAS 78758 (512) 836-2242 FAX (512) 837-4128 http://www.highend.com	Lightwave RESEARCH
FOR PAINTED PARTS REFER TO ENG. SPEC. MANUAL W-0582	MATERIALS: CHARTED	FINISH: NONE		
ALL COMPONENTS, MATERIALS AND FINISHES TO BE IN ACCORDANCE WITH MIL-SPEC	INTERPRET DIMENSIONS PER ASME Y14.5M-1994 THIRD ANGLE PROJECTION DIMENSIONS ARE IN MILLIMETERS	SI METRIC A1	PART NO. INTERNAL TZA002	DRAWING NO. TZA002
VOLUME	DO NOT SCALE	SCALE: 0.160	SHEET: 4 OF 5	REV. 7

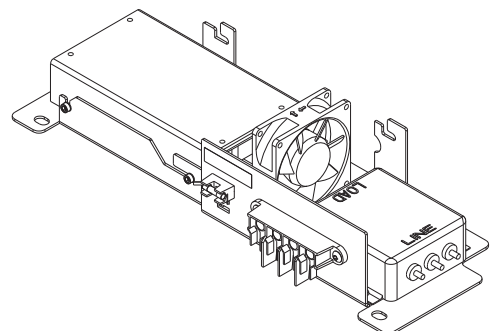
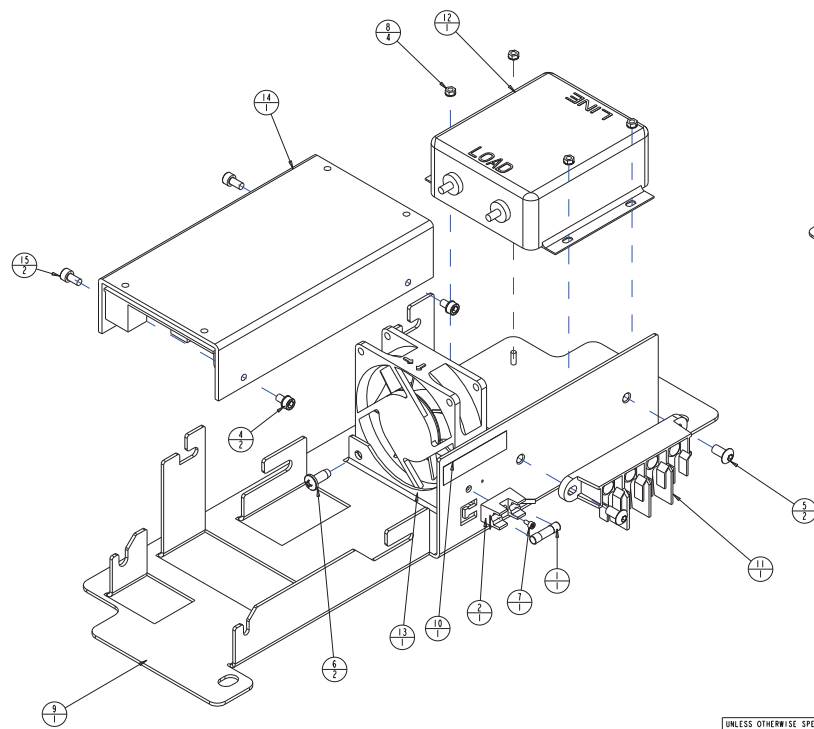


PROPRIETARY NOTICE

THIS DOCUMENT CONTAINS CONFIDENTIAL AND PROPRIETARY INFORMATION OF HIGH END SYSTEMS INC., ALSO ORA (LIGHTWAVE RESEARCH) AND IS GIVEN TO THE RECEIVER IN CONFIDENCE. THE RECEIVER ACCEPTS AND AGREES THAT, EXCEPT AS AUTHORIZED BY HIGH END SYSTEMS, THE RECEIVER WILL NOT PERMIT THE USE OF THE DOCUMENT OR ANY COPY THEREOF OR THE INFORMATION THEREIN, WILL NOT COPY OR FURTHER COPYING THE DOCUMENT, WILL NOT DISCLOSE TO OTHERS EITHER THE DOCUMENT OR THE INFORMATION THEREIN, AND WILL UPON COMPLETION OF THE NEED TO RETAIN THE DOCUMENT, OR UPON DEMAND, RETURN THE DOCUMENT WITHOUT RETAINING ANY OF THE INFORMATION CONTAINED THEREIN IN ANY FORM WHATSOEVER.

UNLESS OTHERWISE SPECIFIED: DIMENSIONAL TOLERANCES: 0 PLACE DECIMAL = ±0.38 1 PLACE DECIMAL = ±0.25 2 PLACE DECIMALS = ±0.13 ANGLES = ±0.5°	RELEASE DATE: ENG: MIKE BELL ME: MEG: DRAWN: CHECKED: DATE:	CE: QA: DRW: PETE PHILLIPS	High End 2100 GRACY FARMS LANE AUSTIN, TEXAS 78758 (512) 836-2242 FAX (512) 837-4128 http://www.highend.com	OR LIGHTWAVE RESEARCH
FOR PAINTED PARTS REFER TO ENG. SPEC. MANUAL W-0582	DESCRIPTION: ELECTRONICS ASSEMBLY, COMPLETE, ME4	MATERIAL: FINISH: NONE		
ALL COMPONENTS, MATERIALS AND FINISHES TO BE AS COMPLIANT	CHARTED	INTERPRET DIMENSIONS PER ASME Y14.5M-1994 THIRD ANGLE PROJECTION DIMENSIONS ARE IN MILLIMETERS	SI METRIC A1	PART NO. INTERNAL TZA002
MIN. HOLES FLATNESS SURFACE VOLUME		DO NOT SCALE	SCALE: 0.160	DRAWING NO. TZA002
				REV. 7
				SHEET: 5 OF 5

TZA035



REV.	DESCRIPTION	DATE	ENG	ECO #	APPR
1	CREATE DRAWING	01DEC07	PP		MB
2	ITEM 7 FROM 4 TO 6mm OAL	10DEC07	PP		MB
3	UPDATE DRAWING VIEWS AND BOM BALLOONS	14DEC07	PP		MB
4	ADD FUSE LABEL, ITEM 13	31JAN08	PP		MB
5	NEW PART # FOR ITEMS 13 AND 14	13MAR08	PP		MB
6	HARDWARE CHANGES PER FACTORY RECOMMENDATIONS	17APR08	PP		MB
7	REVISION CHANGE TO T2114	29APR08	PP		MB

15	2	SCREWM4C08SS	91100408	-	SCREW,M4 SOCKET CAP 08 SS
14	1	TZA031	99070025EF	I	POWER SUPPLY, SWITCHING 40 V MOTOR W/PFC
13	1	FAN_80-80-25MM_AXIAL_LEF	80270025	-	FAN, 12V DC 80 X 80 X 25MM
12	1	LINE_FILTER_ME41	9061073EF	-	FILTER,RFI 20AEA-SCREW TERM IN/OUT
11	1	BLOCK_TERM3-TAB-4-POLE	90460151EF	-	TERMINAL BLOCK, 4 POS X 3 40 AMP CHAS MNT
10	1	TZ456	99310483	B	LABEL, FUSE BLOCK SLOW, ME44
9	1	T2114	99080348	A	PLATE, TRAY, 40V, POWER SUPPLY
8	4	NUTM3HP	91201203	-	NUT,M3 KEPS
7	1	SCREWM4C04BZ	91050304	-	SCREW,M4 SOCKET CAP 04 BZ
6	2	SCREWB10-14PFF500	90709062	-	SCREW, #10 PHIL PAN 1/2 PLASTITE SZ
5	2	SCREWM5B08BP	91010510	-	SCREW,M5 BUTTON 10 BZ W/PATCH
4	2	SCREWM4C06WBZ	91000406	-	SCREW,M4 SOCKET CAP 06 BZ SEMS
2	1	FUSEH0LDRS420	90412018	-	BLOCK, FUSE, SINGLE 5 X 20,
1	1	FUSE420-SA-SLOW	90403012	-	FUSE, 5 AMP SLOW

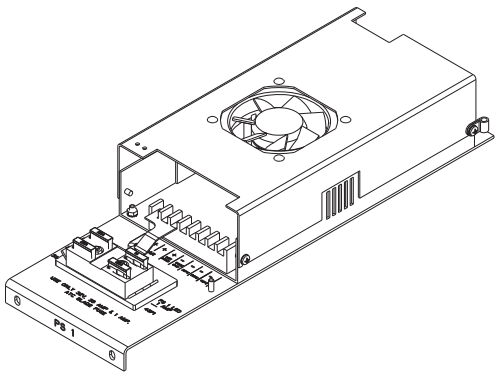
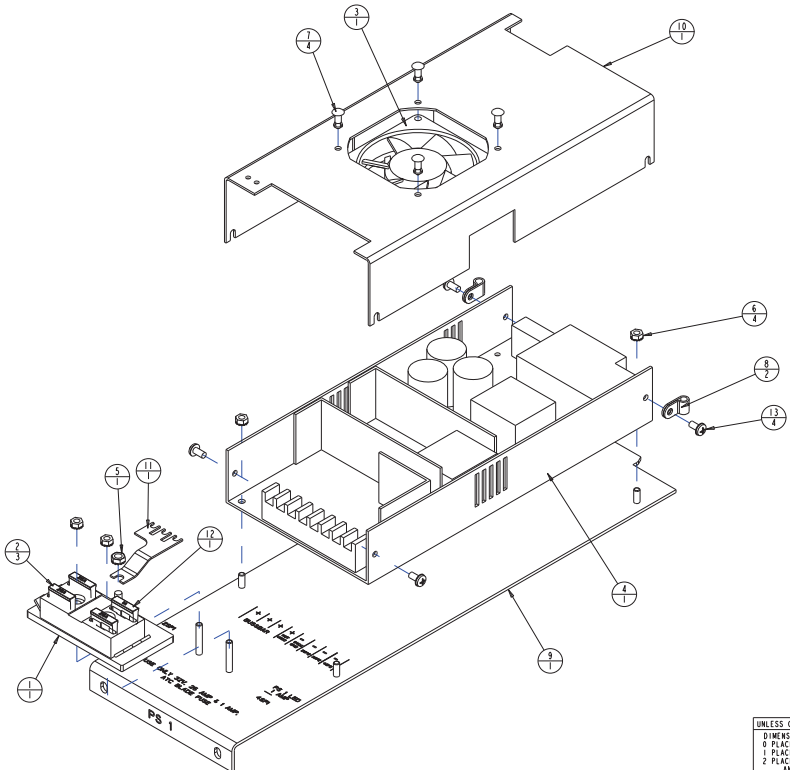
ITEM NO.	QTY.	FILENAME	PART NO.	REV	DESCRIPTION
BILL OF MATERIALS					
UNLESS OTHERWISE SPECIFIED:		RELEASE DATE:	CE:	High End	
DIMENSIONAL TOLERANCES:		ENG: MIKEBELL	DA:	2105 GRACY FARMS LANE	
0 PLACE DECIMAL: ±0.38		ME:		AUSTIN, TEXAS 78758	
1 PLACE DECIMAL: ±0.25		MEG:	DRW: PETE PHILLIPS	(512) 836-2240	
2 PLACE DECIMALS: ±0.13		ASSEMBLY:		FAX (512) 832-4128	
ANGLES: ±0.5°		DESCRIPTION:		http://www.highend.com	
FOR PAINTED PARTS REFER TO:		ASSEMBLY: POWER SUPPLY, 40V			
ENG. SPEC. MANUAL W/0592		MATERIAL:		FINISH:	
ALL COMPONENTS: MATTERING AND FINISHES TO BE BMS COMPLIANT					
MIN. HOLE:		INTERPRET DIMENSIONS PER	PART NO.	DRAWING NO.	REV.
MIN. HOLE:		ASME Y14.5M-1994	INTERNAL	TZA035	7
FLATNESS:		THIRD ANGLE PROJECTION			
THICKNESS:		DIMENSIONS ARE IN MILLIMETERS	DO NOT SCALE	SCALE: 0.500	SHEET: 1 OF 1
VOLUME:					

THIS DOCUMENT CONTAINS CONFIDENTIAL AND PROPRIETARY INFORMATION OF HIGH END SYSTEMS INC., ALSO DBA LIGHTWAVE RESEARCH AND IS GIVEN TO THE RECEIVER IN CONFIDENCE. THE RECEIVER ACCEPTS AND AGREES THAT, EXCEPT AS AUTHORIZED BY HIGH END SYSTEMS, THE RECEIVER WILL NOT PERMIT THE USE OF THE DOCUMENT OR ANY COPY THEREOF OR THE INFORMATION HEREIN, WILL NOT COPY OR REPRODUCE THE DOCUMENT, WILL NOT DISCLOSE TO OTHERS EITHER THE DOCUMENT OR THE INFORMATION THEREIN, AND WILL UPON COMPLETION OF THE NEED TO RETURN THE DOCUMENT, OR UPON DEMAND, RETURN THE DOCUMENT WITHOUT RETAINING ANY OF THE INFORMATION CONTAINED THEREIN IN ANY FORM WHATSOEVER.



TZA005

REV.	DESCRIPTION	DATE	ENG	ECO #	APPR
1	CREATE DRAWING	3DEC07	M BELL		
2	UPDATE DRAWING VIEWS AND BOL BALLOONS	14DEC07	PP		MB
3	ADD FUSE LABEL, ITEM 12	31JAN08	PP		MB
4	ADD ITEM 8, REMOVE M4 CAPS, REPLACE W/ M4 PAN, REV ITEM 9	25FEB08	PP		MB
5	REMOVE IEA 25A FUSE, ADD IEA 1A FUSE, UPDATE REV ON ITEM 9	14MAR08	PP		MB
6	REVISION UPDATE FOR TZ112	29APR08	PP		MB
7	REVISION UPDATE FOR TZ112	09MAY08	PP		MB

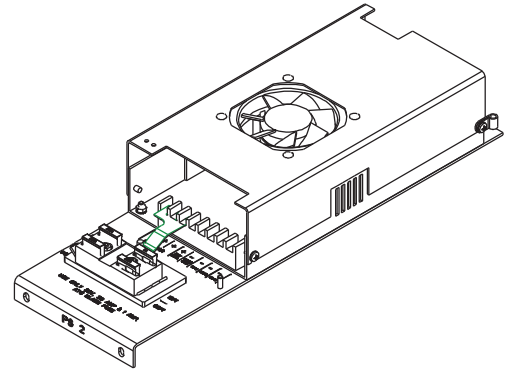
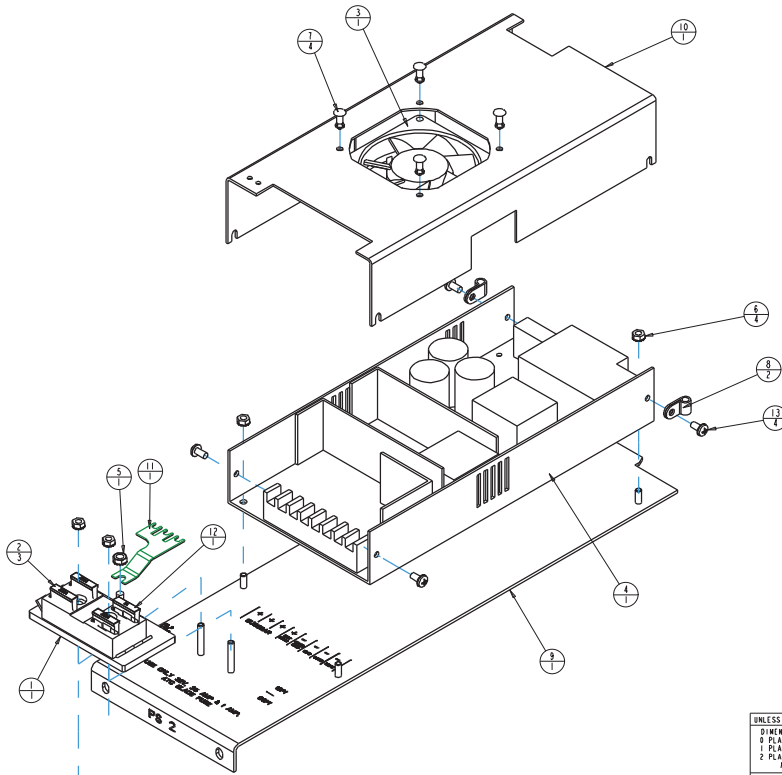


13	4	SCREWM4PP08S02	91020408	SCREW_M4 PHIL PAN 08 SEMS B2	
12	1	FUSE_1A_AUTO	90403032EF	FUSE_1A 32V BLADE AUTOMOTIVE	
11	1	TZ306	99260551	TIE-BAR, POWER SUPPLY	
10	1	TZ113	99080347	COVER, POWER SUPPLY	
9	1	TZ112	99080346	C PLATE, TRAY, POWER SUPPLY, PSI, MEA4	
8	2	CLAMP_108_NY	90410023	CLAMP, 3/16 NYLON CABLE CLAMP BLACK	
7	4	RIVET156X460PUSH_NY	90701336	RIVET, 5/32 PUSH .217-.256 NY BL	
6	4	NUTM4KEP	91201204	NUT, M4 KEPS	
5	1	NUT10-32KEP	90703003	NUT, 10-32 KEPS NUT S2	
4	1	MEANWELL_USP500	99070021EF	POWER SUPPLY,500W 5V MEANWELL USP500-5	
3	1	KT706	80270032	FAN, ASSY 24V DC 80MM X 20MM	
2	3	FUSE_25A_AUTO	90403031EF	FUSE_25A 32V BLADE AUTOMOTIVE	
1	1	BUSSMANN_15600_4	90412028EF	PANEL_FUSE X 4 ATC AUTOMOTIVE TYPE	
ITEM NO.	QTY.	FILENAME	PART NO.	REV	DESCRIPTION

UNLESS OTHERWISE SPECIFIED:		RELEASE DATE:	CE:	High End	
DIMENSIONAL TOLERANCES:	ENG: MIKE BELL	DA:		2105 GRACY FARMS LANE	
0 PLACE DECIMAL = ±0.38	ME:			AUSTIN, TEXAS 78758	
1 PLACE DECIMAL = ±0.25	MEG:	DRW: PETE PHILLIPS		(512) 836-2240	
2 PLACE DECIMALS = ±0.13	MEG:			FAX (512) 832-4128	
ANGLES = ±0.5°				http://www.highend.com	
FOR PAINTED PARTS REFER TO ENG. SPEC. MANUAL WJ-0592		DESCRIPTION: POWER SUPPLY TRAY ASSEMBLY, PS1		FINISH:	
ALL COMPONENTS: MATTERING AND FINISHES TO BE RANS COMPLIANT		MATERIAL:		PART NO. INTERNAL TZA005	
MIN. HOLE:	INTERPRET DIMENSIONS PER ASME Y14.5M-1994			DRAWING NO. TZA005	
FLATNESS:	THIRD ANGLE PROJECTION			REV. 7	
THICKNESS:	DIMENSIONS ARE IN MILLIMETERS	DO NOT SCALE		SCALE: 0.500	
VOLUME:				SHEET: 1 OF 1	

DISPLETEARY NOTICE:
 THIS DOCUMENT CONTAINS CONFIDENTIAL AND PROPRIETARY INFORMATION OF HIGH END SYSTEMS INC., (ALSO DBA LIGHTWAVE RESEARCH) AND IS GIVEN TO THE RECEIVER IN CONFIDENCE. THE RECEIVER ACCEPTS AND AGREES THAT, EXCEPT AS AUTHORIZED BY HIGH END SYSTEMS, THE RECEIVER WILL NOT PERMIT THE USE OF THE DOCUMENT OR ANY COPY THEREOF OR THE INFORMATION HEREIN, WILL NOT COPY OR REPRODUCE THE DOCUMENT, WILL NOT DISCLOSE TO OTHERS EITHER THE DOCUMENT OR THE INFORMATION THEREIN, AND WILL UPON COMPLETION OF THE NEED TO RETAIN THE DOCUMENT, OR UPON DEMAND, RETURN THE DOCUMENT, WITHOUT RETAINING ANY OF THE INFORMATION CONTAINED THEREIN IN ANY FORM WHATSOEVER.

REV.	DESCRIPTION	DATE	ENG	ECO #	APPR
1	CREATE DRAWING	25FEB08	PP		MB
2	REMOVE 1EA 25A FUSE, ADD 1EA 1A FUSE, UPDATE REV ON ITEM 9	14MAR08			MB
3	REVISION UPDATE FOR T2118	09MAY08	PP		MB



ITEM NO.	QTY.	FILENAME	PART NO.	REV	DESCRIPTION
13	4	SCREWM4PP08S02	91020408		SCREW,M4 PHIL PAN 08 SEMS 02
12	1	FUSE_1A_AUTO	90403032EF		FUSE,1A 32V BLADE AUTOMOTIVE
11	1	TZ306	99260551	3	TIE-BAR, POWER SUPPLY
10	1	TZ113	99080347		COVER, POWER SUPPLY
9	1	TZ118	99080351	C	PLATE, TRAY, POWER SUPPLY, PS2, ME44
8	2	CLAMP_188_NY	90410023		CLAMP, 3/16 NYLON CABLE CLAMP BLACK
7	4	RIVET156X460PUSH_NY	90701336		RIVET, 5/32 PUSH .217-.256 NY BL
6	4	NUTM4NEP	91201204		NUT,M4 KEPS
5	1	NUT10_32KEP	90703003		NUT, 10-32 KEPS NUT S2
4	1	MEANWELL_USP500	99070021EF	1	POWER SUPPLY, ME44
3	1	KT706	80270032		FAN, ASSY 24V DC 80MM X 20MM
2	3	FUSE_25A_AUTO	90403031EF		FUSE,25A 32V BLADE AUTOMOTIVE
1	1	BUSSMANN_15600_4	90412028EF	1	PANEL,FUSE X 4 ATC AUTOMOTIVE TYPE

UNLESS OTHERWISE SPECIFIED:			
RELEASE DATE:	CE:	High End 2105 GRACY FARM, LANE	
ENG: MIKE BELL	QA:	AUSTIN, TEXAS 78708	
MEG:	DRW: PETE PHILLIPS	TEL: 512-783-2242	
MFG:		FAX: 512-837-4128	
		***** http://www.highend.com	
DESCRIPTION: POWER SUPPLY TRAY ASSEMBLY, PS2			
FOR PAINTED PARTS REFER TO ENG. SPEC. MANUAL W1-0582			
MATERIAL: TBD			
FINISH: TBD			
ALL COMPONENTS, MATERIALS AND FINISHES TO BE AS COMPLIANT			
MIN. SHEET	INTERPRET DIMENSIONS PER		
MIN. SHEET	ASME Y14.5M-1994		
FLATTENED	THIRD ANGLE PROJECTION		
TOLERANCES	DIMENSIONS ARE IN MILLIMETERS		
VOLUME			
PART NO. INTERNAL TZA010		DRAWING NO. 3	
DO NOT SCALE		SCALE: 0.500	
SHEET: 1 OF 1			

PROPRIETARY NOTICE

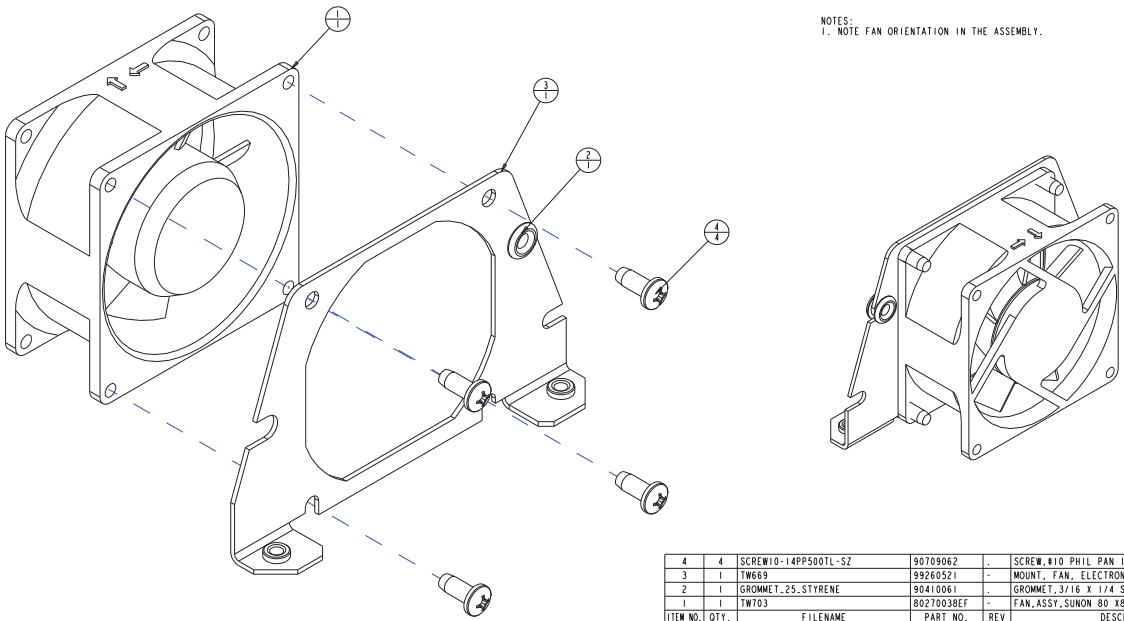
THIS DOCUMENT CONTAINS CONFIDENTIAL AND PROPRIETARY INFORMATION OF HIGH END SYSTEMS, INC., (ALSO DBA LIGHTWAVE RESEARCH) AND IS LOANED TO THE RECEIVER IN CONFIDENCE. THE RECEIVER ACCEPTS AND AGREES THAT, EXCEPT AS AUTHORIZED BY HIGH END SYSTEMS, THE RECEIVER WILL NOT PERMIT THE USE OF THE DOCUMENT OR ANY COPY THEREOF OR THE INFORMATION THEREIN, WILL NOT COPY OR FURTHER COPYING THE DOCUMENT, WILL NOT DISCLOSE TO OTHERS EITHER THE DOCUMENT OR THE INFORMATION THEREIN, AND WILL UPON COMPLETION OF THE NEED TO RETURN THE DOCUMENT, OR UPON DEMAND, RETURN THE DOCUMENT, WITHOUT RETAINING ANY OF THE INFORMATION CONTAINED THEREIN IN ANY FORM WHATSOEVER.

TZA010 -- Type: ASSEM

Rev: 3
 Symix: INTERNAL
 Desc: POWER SUPPLY TRAY ASSEMBLY, PS2
 Mat'l: TBD
 Finish:
 Release:
 Eng: MIKE BELL

REV.	DESCRIPTION	DATE	ENG	ECO #	APPR
1	CREATE DRAWING	25FEB08	PP		MB
2	FAN PART NUMBER TO EF	05MAR08	PP		MB
3	CHANGE FAN MOUNT ITEM 3, ADD ITEM2	14MAR08	PP		MB
4	FILENAME WAS FAN. . . : NOW TW703 (MATCHES PDF SPEC)	15MAY08	LR		

NOTES:
1. NOTE FAN ORIENTATION IN THE ASSEMBLY.

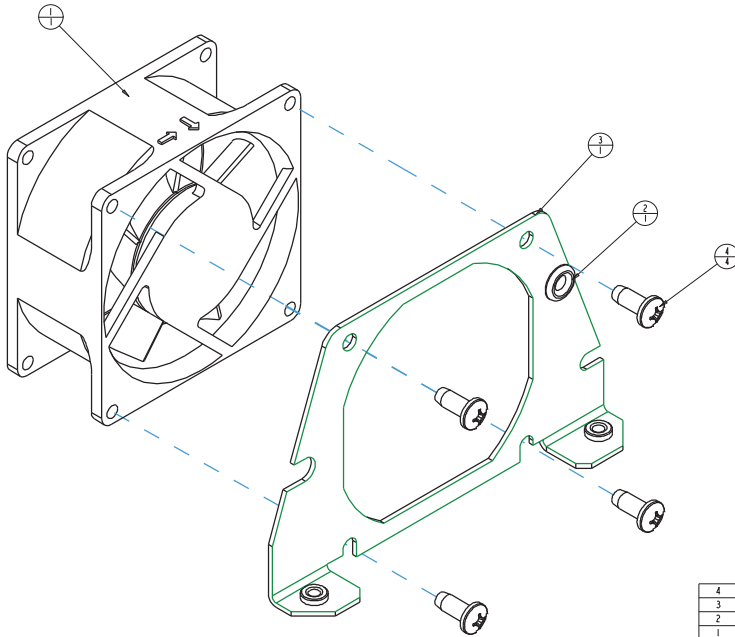


ITEM NO.	QTY.	FILENAME	PART NO.	REV	DESCRIPTION
4	4	SCREW10-14PP500TL-SZ	90709062	-	SCREW, #10 PHIL PAN 1/2 PLASTITE SZ
3	1	TW669	99260521	-	MOUNT, FAN, ELECTRONIC ENCLOSURE, SHOGUN
2	1	GROMMET_25_STYRENE	90410061	-	GROMMET, 3/16 X 1/4 STYRENE BUTADIENE
1	1	TW703	80270038EF	-	FAN, ASSY, SUNON 80 X80 X38MM 74.5 CFM

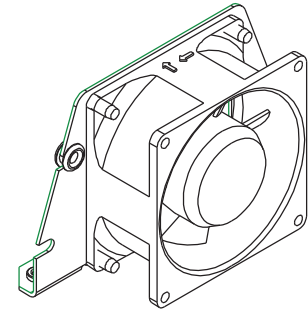
UNLESS OTHERWISE SPECIFIED:		RELEASE DATE:	CE:	High End 2105 GRACY FARMS LANE AUSTIN, TEXAS 78758 (512) 836-2240 FAX (512) 832-4128 ***** http://www.highend.com	
DIMENSIONAL TOLERANCES:		ENG: MIKE BELL	QA:		
0 PLACE DECIMAL = ±0.38		MEG:	DRW: PETE PHILLIPS		
1 PLACE DECIMAL = ±0.25		DESCRIPTION: FAN ASSEMBLY, EXHAUST			
2 PLACE DECIMALS = ±0.13		MATERIAL: NA			
ANGLES = ±0.5°		FINISH: NA			
FOR PAINTED PARTS REFER TO ENG. SPEC. MANUAL WJ-0592		PART NO. INTERNAL TWA065			
ALL COMPONENTS, MATERIALS AND FINISHES TO BE HANS COMPLIANT		DRAWING NO. TWA065			
MIN. HOLE:		REV. 4			
MIN. HOLE:		INTERPRET DIMENSIONS PER ASME Y14.5M-1994			
FLATNESS:		THIRD ANGLE PROJECTION			
THICKNESS:		DIMENSIONS ARE IN MILLIMETERS			
VOLUME:		DO NOT SCALE SCALE: 1,000 SHEET: 1 OF 1			

DISPLETEARY NOTICE
 THIS DOCUMENT CONTAINS CONFIDENTIAL AND PROPRIETARY INFORMATION OF HIGH END SYSTEMS INC., ALSO DBA LIGHTWAVE RESEARCH AND IS GIVEN TO THE RECEIVER IN CONFIDENCE. THE RECEIVER ACCEPTS AND AGREES THAT, EXCEPT AS AUTHORIZED BY HIGH END SYSTEMS, THE RECEIVER WILL NOT PERMIT THE USE OF THE DOCUMENT OR ANY COPY THEREOF OR THE INFORMATION HEREIN, WILL NOT COPY OR REPRODUCE THE DOCUMENT, WILL NOT DISCLOSE EITHER THE DOCUMENT OR THE INFORMATION THEREIN, AND WILL UPON COMPLETION OF THE NEED TO RETAIN THE DOCUMENT, OR UPON DEMAND, RETURN THE DOCUMENT WITHOUT RETAINING ANY OF THE INFORMATION CONTAINED THEREIN IN ANY FORM WHATSOEVER.

REV.	DESCRIPTION	DATE	ENG	ECO #	APPR
1	CREATE DRAWING	26FEB08	PP		MB
2	FAN PART NUMBER TO EF	SMAR08	PP		MB
3	CHANGE FAN MOUNT ITEM 3, ADD ITEM 2	14MAR08	PP		MB



NOTES:
1. NOTE FAN ORIENTATION IN THE ASSEMBLY.



ITEM NO.	QTY.	DESCRIPTION	FILENAME	PART NO.	REV	DESCRIPTION
4	4	SCREW#10-14PPF500	90708062	.		SCREW, #10 PHIL PAN 1/2 PLASTITE SZ
3	1	TW669	99260521	-		MOUNT, FAN, ELECTRONIC ENCLOSURE, SHONGUN
2	1	GROMMET, 25, STYRENE	90410061	1		GROMMET, 3/16 X 1/4
1	1	SUNON, 80 X 80 X 38 AXIAL FAN	80270038EF	.		FAN ASST, 80X80X38 HI-FLOW

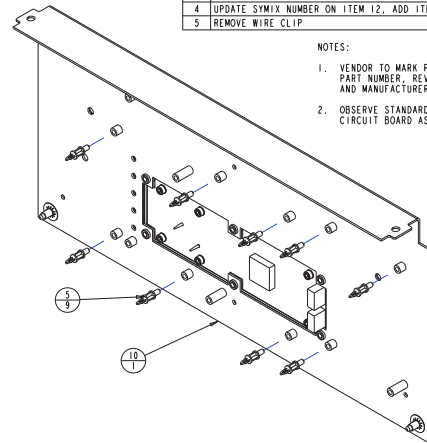
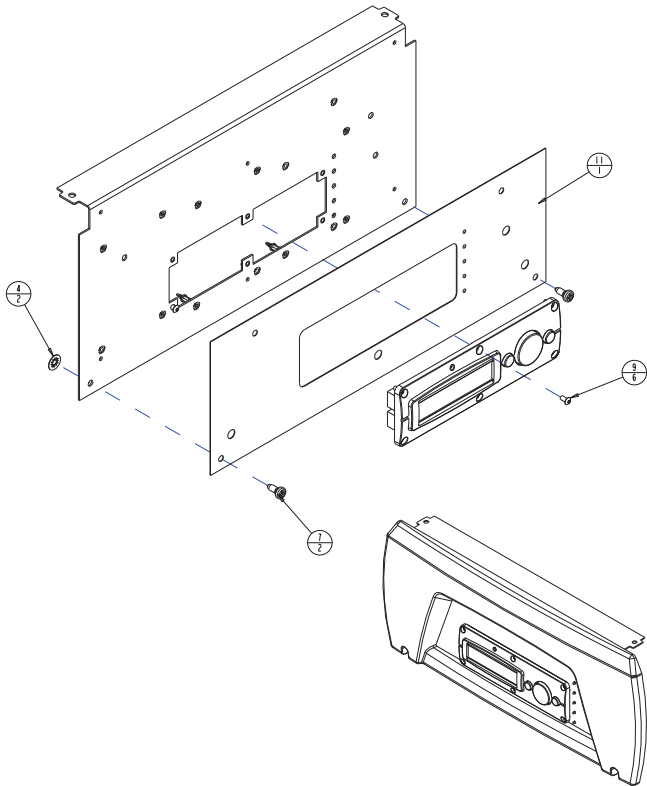
BILL OF MATERIALS

UNLESS OTHERWISE SPECIFIED:	RELEASE DATE:	CE:	High End	2105 GRACY FARMS LANE AUSTIN, TEXAS 78708 (512) 836-2242 FAX (512) 837-4128 http://www.highend.com	
DIMENSIONAL TOLERANCES:	ENG: MIKE BELL	QA:			
0 PLACE DECIMAL = ±0.38	ME:	DRW: PETE PHILLIPS			
1 PLACE DECIMAL = ±0.25	MEG:				
2 PLACE DECIMALS = ±0.13	DESCRIPTION:				
ANGLES = ±0.5°	FAN ASSEMBLY, INTAKE				
FOR PAINTED PARTS REFER TO	FINISH:				
ENG. SPEC. MANUAL W-0582	MATERIAL:				
ALL COMPONENTS, MATERIALS AND FINISHES TO BE AS COMPLIANT	TBD				
MIN. SHFT	INTERPRET DIMENSIONS PER	SI	PART NO.	DRAWING NO.	REV.
MIN. SHFT	ASME Y14.5M-1994	METRIC	INTERNAL	TW811	3
FLATTEN	THIRD ANGLE PROJECTION	A1	DO NOT SCALE	SCALE: 1:000	SHEET: 1 OF 1
TOLERANCES	DIMENSIONS ARE IN MILLIMETERS				
VOLUME					

PROPRIETARY NOTICE

THIS DOCUMENT CONTAINS CONFIDENTIAL AND PROPRIETARY INFORMATION OF HIGH END SYSTEMS, INC., (A DAA LIGHTWAVE RESEARCH) AND IS GIVEN TO THE RECEIVER IN CONFIDENCE. THE RECEIVER ACCEPTS AND AGREES THAT, EXCEPT AS AUTHORIZED BY HIGH END SYSTEMS, THE RECEIVER WILL NOT PERMIT THE USE OF THE DOCUMENT OR ANY COPY THEREOF OR THE INFORMATION THEREIN, WILL NOT COPY OR FURTHER COPYING THE DOCUMENT WILL NOT DISCLOSE TO OTHERS EITHER THE DOCUMENT OR THE INFORMATION THEREIN, AND WILL UPON COMPLETION OF THE NEED TO RETAIN THE DOCUMENT, OR UPON DEMAND, RETURN THE DOCUMENT WITHOUT RETAINING ANY OF THE INFORMATION CONTAINED THEREIN IN ANY FORM WHATSOEVER.

TZA030



REV.	DESCRIPTION	DATE	ENG	ECO #	APPR
1	CREATE DRAWING	01DEC07	KLB		
2	UPDATE DRAWING VIEWS AND BOM BALLOONS	14DEC07	PP		MB
3	CHANGE PCB ITEM 12	05MAR08	PP		MB
4	UPDATE SYMIX NUMBER ON ITEM 12, ADD ITEM 3	14MAR08	PP		MB
5	REMOVE WIRE CLIP	07MAY08	PP		MB

NOTES:

- VENDOR TO MARK PART OR BAG OF PARTS WITH PART NUMBER, REVISION, DATE CODE (WWYY OR YYMMDD), AND MANUFACTURER NAME OR LOGO.
- OBSERVE STANDARD ESD GROUNDING DURING CIRCUIT BOARD ASSEMBLY.

13	1	DB200	CHARTED	B	BEZEL, TOP BOX, DL2
12	1	T2433	80060031EF	I	BOARD, ASSY, LED DISPLAY
11	2	TW440	80010208EF	I, J	BOARD, PAN & TILT MODULE 620X1 ASSY
10	1	T2450	99310474	-	LABEL, FRONT PANEL, ME4
9	1	TW199	99050558	B	PANEL, FRONT, ELECTRONIC ENCLOSURE, ME-A1
8	6	SCREW M4A08B08ZP	91010408	.	SCREW, M4 BUTTON 08 BZ W/PATCH
7	5	SCREW M4A06W-BZ	91000406	.	SCREW, M4 SOCKET CAP 06 BZ SEMS
6	2	SCREW CAPTIVE 230PP61ILG	90712007	.	SCREW, CAPTIVE PHIL .23 OD X .611 LG CR
5	6	SCREW 6-19PP380BTPE-BZ	90709117	.	SCREW, 6-19 PHIL PAN PLASTITE 3/8 BZ
4	9	SUPPORT, LCBS	90702271	.	SPACER, SUPPORT, PCB NYLON
3	2	RETAINER, CAPTIVE, SS	90701362	.	RETAINER, CAPTIVE, SS, MED
2	1	TWA095	80010209	A	ASSY, VFD DISPLAY CLEAR WINDOW TESTED
1	1	FS706	80010139	2	BOARD, CPU MODULE 520RE TESTED

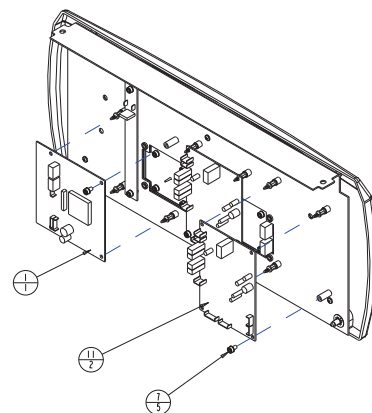
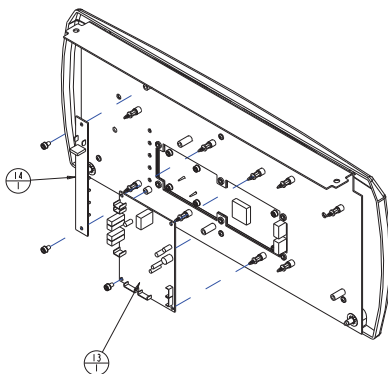
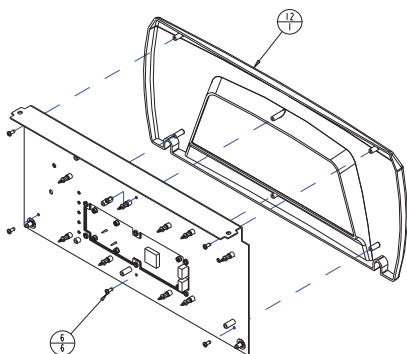
ITEM NO.	QTY.	FILENAME	PART NO.	REV	DESCRIPTION
BILL OF MATERIALS					

UNLESS OTHERWISE SPECIFIED:	RELEASE DATE:	CE:	High End	2105 GRACY FARMS LANE AUSTIN, TEXAS 78758 (512) 836-2244 FAX (512) 832-4128 http://www.highend.com	
DIMENSIONAL TOLERANCES: 0 PLACE DECIMAL: ±0.38 1 PLACE DECIMAL: ±0.25 2 PLACE DECIMALS: ±0.13 ANGLES: ±0.5°	ENG: KEITH BRADY	QA:	MEG:	DRW: KEITH BRADY	
FOR PAINTED PARTS REFER TO ENG. SPEC. MANUAL W1-0592	DESCRIPTION: PANEL ASSEMBLY, FRONT, ELECT ENCL., ME4	MATERIAL:	FINISH:	NA	
ALL COMPONENTS: MATURING AND FINISHES TO BE BENS COMPLIANT	INTERPRET DIMENSIONS PER ASME Y14.5M-1994 THIRD ANGLE PROJECTION DIMENSIONS ARE IN MILLIMETERS	SI METRIC A1	PART NO. INTERNAL TZA030	DRAWING NO. TZA030	REV. 5
VOLUME	DO NOT SCALE	SCALE: 0.400	SHEET: 1 OF 2		

DISPOSABLE LEADY, NOT LEGAL

THIS DOCUMENT CONTAINS CONFIDENTIAL AND PROPRIETARY INFORMATION OF HIGH END SYSTEMS, INC., ALSO DBA LIGHTWAVE RESEARCH, AND IS GIVEN TO THE RECEIVER IN CONFIDENCE. THE RECEIVER ACCEPTS AND AGREES THAT, EXCEPT AS AUTHORIZED BY HIGH END SYSTEMS, THE RECEIVER WILL NOT PERMIT THE USE OF THE DOCUMENT OR ANY COPY THEREOF OR OF THE INFORMATION HEREIN, WILL NOT COPY OR REPRODUCE THE DOCUMENT, WILL NOT DISCLOSE TO OTHERS EITHER THE DOCUMENT OR THE INFORMATION THEREIN, AND WILL UPON COMPLETION OF THE NEED TO RETAIN THE DOCUMENT, OR UPON DEMAND, RETURN THE DOCUMENT WITHOUT RETAINING ANY OF THE INFORMATION CONTAINED THEREIN IN ANY FORM WHATSOEVER.

TZA030

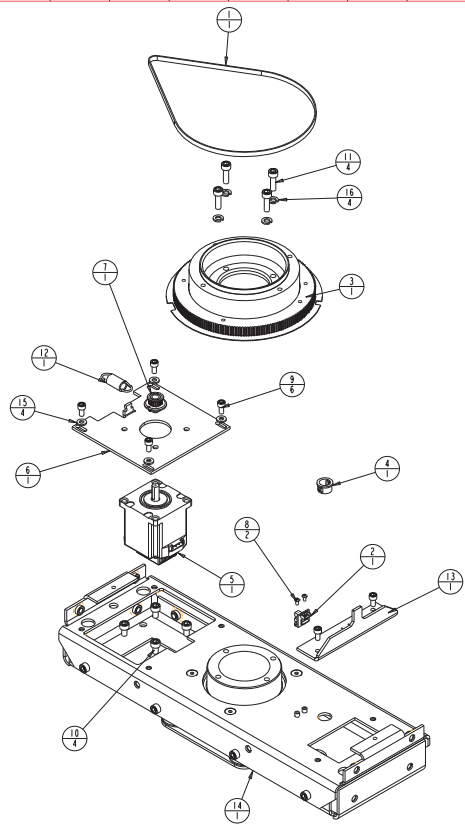


DISCLAIMER NOTICE

THIS DOCUMENT CONTAINS CONFIDENTIAL AND PROPRIETARY INFORMATION OF HIGH END SYSTEMS INC., ALSO DBA LIGHTWAVE RESEARCH, AND IS GIVEN TO THE RECEIVER IN CONFIDENCE. THE RECEIVER ACCEPTS AND AGREES THAT, EXCEPT AS AUTHORIZED BY HIGH END SYSTEMS, THE RECEIVER WILL NOT PERMIT THE USE OF THE DOCUMENT OR ANY COPY THEREOF OR THE INFORMATION THEREIN, WILL NOT COPY OR REPRODUCE THE DOCUMENT, WILL NOT DISCLOSE TO OTHERS EITHER THE DOCUMENT OR THE INFORMATION THEREIN, AND WILL UPON COMPLETION OF THE NEED TO RETURN THE DOCUMENT, OR UPON DEMAND, RETURN THE DOCUMENT WITHOUT RETAINING ANY OF THE INFORMATION CONTAINED THEREIN IN ANY FORM WHATSOEVER.

UNLESS OTHERWISE SPECIFIED:	RELEASE DATE:	CE:	High End	2105 GRACY FARMS LANE AUSTIN, TEXAS 78758 (512) 836-2244 FAX (512) 832-4128 http://www.highend.com	
DIMENSIONAL TOLERANCES:	ENG: KEITH BRADY	DA:			
0 PLACE DECIMAL: ± 0.38	MEG:				
1 PLACE DECIMAL: ± 0.25	MEG:	DRW: KEITH BRADY			
2 PLACE DECIMALS: ± 0.13	MEG:				
ANGLES: $\pm 0.5^\circ$					
FOR PAINTED PARTS REFER TO:	DESCRIPTION:				
ENG. SPEC. MANUAL W1-0592	PANEL ASSEMBLY, FRONT, ELECT ENCL. ME44				
ALL COMPONENTS: MATERIALS AND FINISHES TO BE BANS COMPLIANT	MATERIAL:			FINISH:	
	CHARTED			NA	
MIN. HOLE:	INTERPRET DIMENSIONS PER	SI	PART NO.	DRAWING NO.	REV.
FLATNESS:	ASME Y14.5M-1994	METRIC	INTERNAL	TZA030	5
THICKNESS:	THIRD ANGLE PROJECTION	A1	DO NOT SCALE	SCALE: 0.400	SHEET: 2 OF 2
VOLUME:	DIMENSIONS ARE IN MILLIMETERS				

TWA081



REV.	DESCRIPTION	DATE	ENG	ECO #	APPR
1	CREATE DRAWING		KDB		
2	REPLACE DB335 PINION WITH TW335 PINION	29APR08	PP		MB

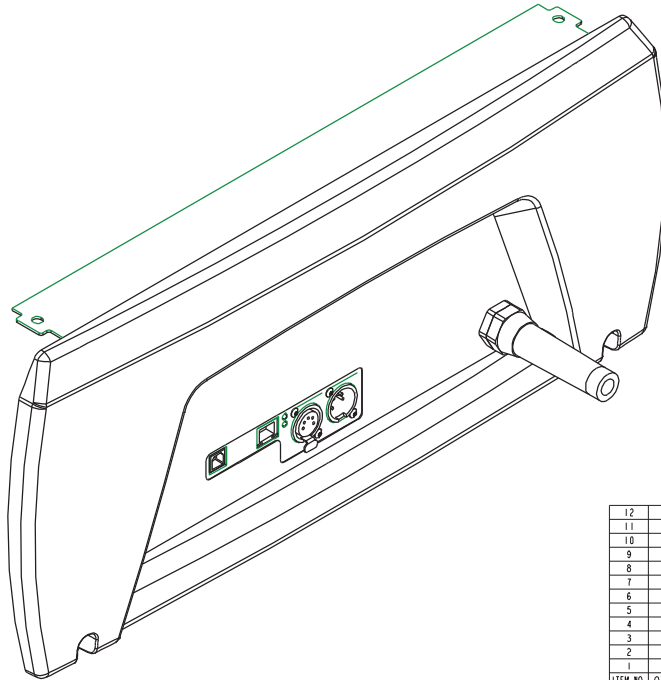
ITEM NO.	QTY.	FILENAME	PART NO.	REV	DESCRIPTION
16	4	WASHER_M6_SPLITLOC	98809206	I	WASHER_LOCK_SPLIT_M6_SS
15	4	WASHERI0-204X40SS	90706012	.	WASHER_FLAT #10 SS
14	1	TWA094	80460012	C	SUPPORT_ASSY_PAN BEARING V4
13	1	TW536	99260515	-	STOP_PAN LOCK_SG
12	1	SPRING500_1250_LG	90701354	.	SPRING_EXTENSION_500 X 1.25 LG
11	4	SCREWM6AC20SS	91100620	.	SCREW_M6 SOCKET CAP 20 SS
10	4	SCREWM6AC10SS	91100610	.	SCREW_M6 SOCKET CAP 10 SS W/PATCH
9	6	SCREWM5AC10SSP	91100510	.	SCREW_M5 SOCKET CAP 10 SS W/PATCH
8	2	SCREWM3AB06BZP	91010306	.	SCREW_M3 BUTTON SOCKET HD 06 BZ W/PATCH
7	1	TW335	99430126	-	PINION ASSY 17T 3MM HTD, LOW PROFILE
6	1	TW527	99260505	A	MOUNT_PAN MOTOR_SG
5	1	TW502	INTERNAL	2	MOTOR_ENCODER ASSEMBLY MEA1
4	1	BUSHING500SNAP	90410102	.	GROMMET_SNAP BUSHING .50 ID
3	1	DBA015	INTERNAL	NA	GEAR ASSY_PAN DL2
2	1	FS709	80040022EF	1.0	BOARD_ASSY X-SPOT FLAG HOMING SENSOR
1	1	TW504	99360050	.	BELT_TIMING 3MM HTD, 200 GROOVE, 6MM

BILL OF MATERIALS

UNLESS OTHERWISE SPECIFIED:	RELEASE DATE:	CE:	High End 2105 GRACY FARMS LANE AUSTIN, TEXAS 78758 (512) 836-2240 FAX (512) 832-4128 http://www.highend.com	 LIGHTWAVE RESEARCH
DIMENSIONAL TOLERANCES:	ENG:	DA:		
0 PLACE DECIMAL: ±0.38	MEG:	DRW: K. BICKERS		
1 PLACE DECIMAL: ±0.25	MEG:			
2 PLACE DECIMALS: ±0.13	ANGLES: ±0.5			
FOR PAINTED PARTS REFER TO ENG. SPEC. MANUAL WJ-0592	MATERIAL:	DESCRIPTION:	FINISH:	
ALL COMPONENTS: MATERIALS AND FINISHES TO BE BANS COMPLIANT	INTERNAL:	PAN BEARING COMPLETE SG	NONE	
MIN. HOLE:	INTERPRET DIMENSIONS PER ASME Y14.5M-1994	THIRD ANGLE PROJECTION	DIMENSIONS ARE IN MILLIMETERS	PART NO. INTERNAL TWA081 DRAWING NO. TWA081 DO NOT SCALE SCALE: 0.500 SHEET: 1 OF 1

DISPLETEARY NOTICE
 THIS DOCUMENT CONTAINS CONFIDENTIAL AND PROPRIETARY INFORMATION OF HIGH END SYSTEMS INC., ALSO DBA LIGHTWAVE RESEARCH AND IS GIVEN TO THE RECEIVER IN CONFIDENCE. THE RECEIVER ACCEPTS AND AGREES THAT, EXCEPT AS AUTHORIZED BY HIGH END SYSTEMS, THE RECEIVER WILL NOT PERMIT THE USE OF THE DOCUMENT OR ANY COPY THEREOF OR THE INFORMATION HEREIN, WILL NOT COPY OR REPRODUCE THE DOCUMENT, WILL NOT DISCLOSE TO OTHERS EITHER THE DOCUMENT OR THE INFORMATION THEREIN, AND WILL UPON COMPLETION OF THE NEED TO RETURN THE DOCUMENT, OR UPON DEMAND, RETURN THE DOCUMENT WITHOUT RETAINING ANY OF THE INFORMATION CONTAINED THEREIN IN ANY FORM WHATSOEVER.

TZA034



REV.	DESCRIPTION	DATE	ENG	ECO #	APPR
1	CREATE DRAWING	16NOV07	M BELL		
2	ITEM 10 TO REV 2. UPDATE DRAWING VIEW AND BOW BALLOONS	09JAN08	PP		MB
3	UPDATE SYMIX NUMBER ON ITEM 1	14MAR08	PP		MB
4	CHANGE ITEM 8 FROM 91000408 TO 91000416	29MAY08	PP		MB

ITEM NO.	QTY.	FILENAME	PART NO.	REV	DESCRIPTION
12	1	TZ451	99310475	A	LABEL, REAR PANEL, ME44
11	1	TZ432	80030090EF	1.0	BOARD, IO USB B ASSY
10	1	TZ116	80070506	-	PANEL, REAR, I/O ME44
9	1	STRAIN_RELIEF	90414008	-	STRAIN RELIEF, POWERGRIP BLK CL/CX
8	2	SCREW#4AC16W-BZ	91000416	-	SCREW, M4 SOCKET CAP 16 BZ SEMS
7	4	SCREW#3AB060ZP	91010306	-	SCREW, M3 BUTTON SOCKET HD 06 BZ W/PATCH
6	6	SCREW#-19PP3808TYPE-BZ	90709117	-	SCREW, 6-19 PHIL PAN PLASTITE 3/8 BZ
5	2	SCREW-CAPTIVE230PP611LG	90712007	-	SCREW, CAPTIVE, PHIL, .23 OD X .611 LG CR
4	2	RETAINER-CAPTIVE_SS	90701362	-	RETAINER, CAPTIVE, SS, MED
3	1	NUT500NPT_NYLON	90703030	-	NUT, 1/2 NPT STRAIN RELIEF CYBER, CX
2	1	FS707	80030049EF	1.0	BOARD, ASSY CONNECTOR X-SPOT/SG
1	1	DB200	CHARTED	B	BEZEL, TOP BOX, DL2

BILL OF MATERIALS

UNLESS OTHERWISE SPECIFIED:
 DIMENSIONAL TOLERANCES:
 0 PLACE DECIMAL = ±0.38
 1 PLACE DECIMAL = ±0.25
 2 PLACE DECIMAL = ±0.13
 ANGLES = ±0.5°

RELEASE DATE:
 ENG:
 MFG:
 DRW: M BELL

CE:

QA:

MFG:

DRW:



2105 GRACY FARMS LANE
 AUSTIN, TEXAS 78708
 (512) 836-2242
 FAX: (512) 837-4128
 http://www.highend.com



FOR PAINTED PARTS REFER TO
 ENG. SPEC. MANUAL W-0582
 ALL COMPONENTS, MATERIALS AND
 FINISHES TO BE AS COMPLIANT
 MIN. SHEET
 MIN. SHEET
 LAYERS
 THICKNESS
 VOLUME

DESCRIPTION:
 PANEL ASSEMBLY, I/O, ELECTRONIC ENCLOSURE, ME44
 MATERIAL:
 CHARTED

FINISH:
 N/A

INTERPRET DIMENSIONS PER
 ASME Y14.5M-1994
 THIRD ANGLE PROJECTION
 DIMENSIONS ARE IN MILLIMETERS

SI
 METRIC
 A1

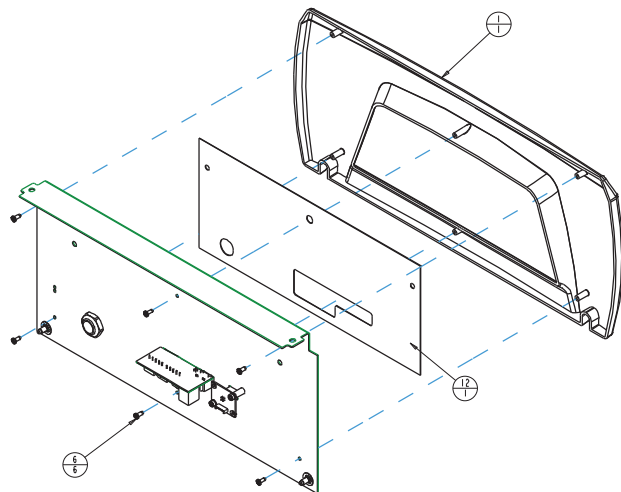
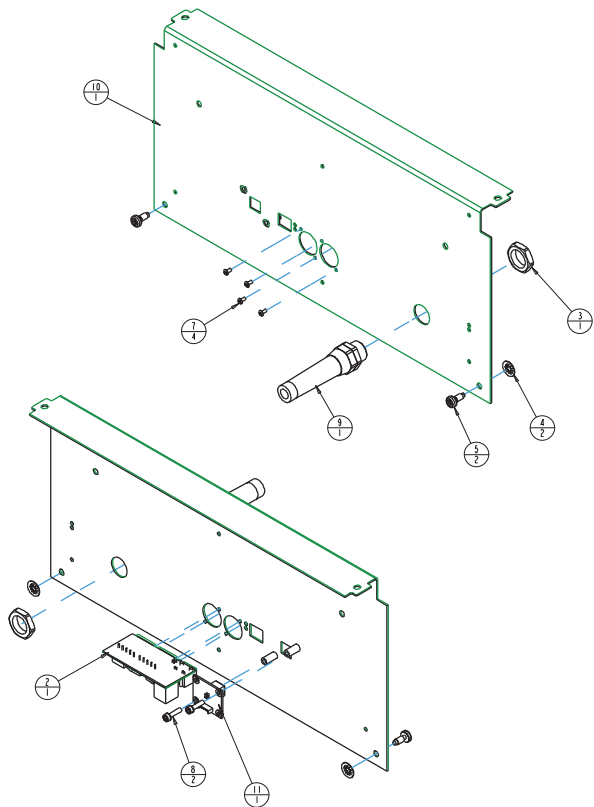
PART NO.
 INTERNAL TZA034

DRAWING NO.
 TZA034

REV.
 4
 DO NOT SCALE SCALE: 0.333 SHEET: 1 OF 2

PROPRIETARY NOTICE

THIS DOCUMENT CONTAINS CONFIDENTIAL AND PROPRIETARY INFORMATION OF HIGH END SYSTEMS, INC., (ALSO DBA LIGHTWAVE RESEARCH) AND IS GIVEN TO THE RECEIVER IN CONFIDENCE. THE RECEIVER ACCEPTS AND AGREES THAT, EXCEPT AS AUTHORIZED BY HIGH END SYSTEMS, THE RECEIVER WILL NOT PERMIT THE USE OF THE DOCUMENT OR ANY COPY THEREOF OR THE INFORMATION THEREIN, WILL NOT COPY OR FURTHER COPY THE DOCUMENT, WILL NOT DISCLOSE TO OTHERS EITHER THE DOCUMENT OR THE INFORMATION THEREIN, AND WILL UPON COMPLETION OF THE NEED TO RETAIN THE DOCUMENT, OR UPON DEMAND, RETURN THE DOCUMENT WITHOUT RETAINING ANY OF THE INFORMATION CONTAINED THEREIN IN ANY FORM WHATSOEVER.

**PROPRIETARY NOTICE**

THIS DOCUMENT CONTAINS CONFIDENTIAL AND PROPRIETARY INFORMATION OF HIGH END SYSTEMS, INC., ALSO DBA LIGHTWAVE RESEARCH AND IS GIVEN TO THE RECIPIENT IN CONFIDENCE. THE RECIPIENT ACCEPTS AND AGREES THAT, EXCEPT AS AUTHORIZED BY HIGH END SYSTEMS, THE RECIPIENT WILL NOT PERMIT THE USE OF THE DOCUMENT OR ANY COPY THEREOF OR THE INFORMATION THEREIN, WILL NOT COPY OR FURTHER COPY THE DOCUMENT, WILL NOT DISCLOSE TO OTHERS EITHER THE DOCUMENT OR THE INFORMATION THEREIN, AND WILL UPON COMPLETION OF THE NEED TO RETAIN THE DOCUMENT, OR UPON DEMAND, RETURN THE DOCUMENT WITHOUT RETAINING ANY OF THE INFORMATION CONTAINED THEREIN IN ANY FORM WHATSOEVER.

UNLESS OTHERWISE SPECIFIED:
 DIMENSIONAL TOLERANCES:
 0 PLACE DECIMAL = ±0.38
 1 PLACE DECIMAL = ±0.25
 2 PLACE DECIMALS = ±0.13
 ANGLES = ±0.5°

FOR PAINTED PARTS REFER TO
 ENG. SPEC. MANUAL W-0582

ALL COMPONENTS, MATERIALS AND
 FINISHES TO BE AS COMPLIANT

MIN. SHFT
 MIN. SHFT
 PLATERS
 FINISHES
 VOLUME

RELEASE DATE:
 ENG:
 ME:
 MFG:

CE:
 QA:
 DRW: M. BELL

High End 2100 GRACY FARMS LANE
 AUSTIN, TEXAS 78758
 (512) 836-2242
 FAX (512) 837-4128
 http://www.highend.com



DESCRIPTION: PANEL ASSEMBLY, I/O, ELECTRONIC ENCLOSURE, ME44

MATERIALS:

CHARTED
 INTERPRET DIMENSIONS PER
 ASME Y14.5M-1994
 THIRD ANGLE PROJECTION
 DIMENSIONS ARE IN MILLIMETERS

FINISH:
 N/A

PART NO. **INTERNAL TZA034**

DRAWING NO.

REV.

DO NOT SCALE

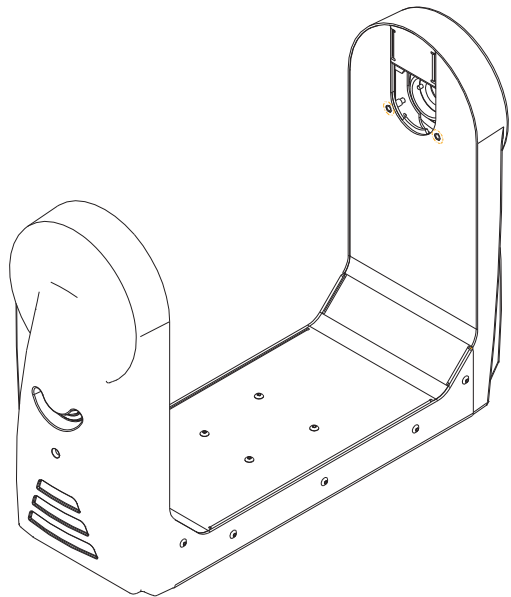
SCALE: 0.333

SHEET: 2 OF 2

TZA003

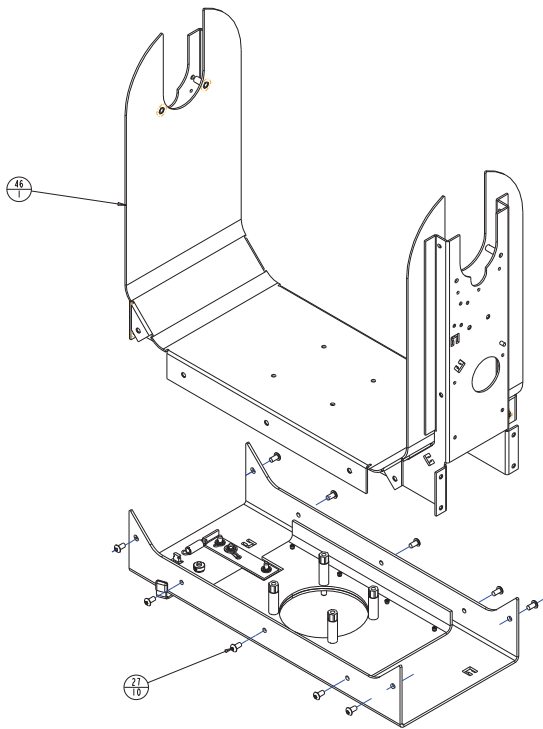
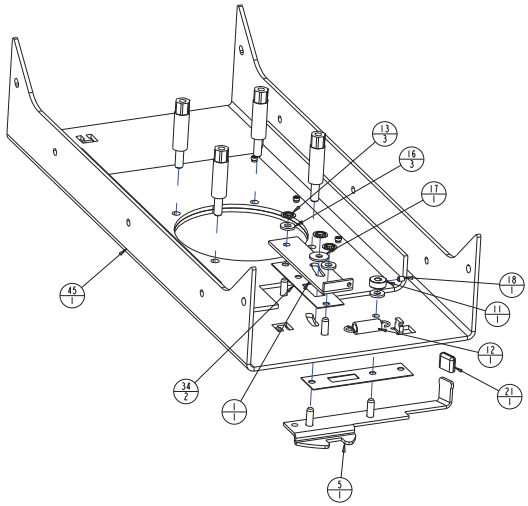
REV.	DESCRIPTION	DATE	ENG	ECO #	APPR
1	CREATE DRAWING	24SEP07	KLB		
2	UPDATE DRAWING VIEWS AND BOM BALLOONS	14DEC07	PP		
3	REMOVE UNSUED IDLER PARTS FROM BOM	22FEB08	PP		MB
4	REMOVE TILT TUBES AND RETAINING RING, ADD TO TZA004	05MAR08	PP		MB
5	ADD ITEM 31, CORRECT BOM BALLOONS, NEW ITEM 6	17MAR08	PP		MB
6	ADD ITEM 49, ADD 2X ITEM 25.	29MAR08	PP		MB

ITEM NO.	QTY.	FILENAME	PART NO.	REV	DESCRIPTION	
49	1	CAT197	99263112	B	BRACKET,WIRE GUIDE,LEFT,DL	
48	1	CATA031	NA	4	LATCH, ASSY, TILT, DLI	
47	1	TW502	INTERNAL	2	MOTOR, ENCODER ASSEMBLY MEAT	
46	1	TW093	CHARTED	B	YOKE, WELDED ASSY PAINTED SG	
45	1	DB195	CHARTED	D	SUPPORT, REINFORCED YOKE BASE DL2	
44	1	FS709	8004002EF	I, O	BOARD, ASSY X-SPOT FLAG HOMING SENSOR	
43	1	TW335	99430126	-	PINION ASSY 1TT 3MM HTD, LOW PROFILE	
42	1	CAT317	99430107	B	GEAR, PULLEY, 170T TILT/PAN DRIVE, DLI	
41	1	TW380	99400097	A	HUB, TILT SENSOR SG	
40	1	TW503, TENSIONED	99360049	.	BELT, TIMING 3MM HTD, 305 GROOVE, 6MM	
39	1	CAT328	99360041	A	PULLEY, ADAPTOR, TILT, DLI	
38	1	CAT198	99263113	D	BRACKET,WIRE GUIDE,RIGHT,DL	
37	1	TW529	99260506	B	BRACKET,TILT SENSOR, SG	
36	2	TW526	99260504	D	MOUNT,TILT MOTOR, SG	
35	2	CAT186	99260424	B	BRACKET, YOKE ARM COVER RETAINER DL	
34	2	DB210	99190090	-	SHIM, PAN LATCH, DL2	
33	1	TW519	99080311	B	PLATE, TILT SENSOR SG	
32	1	NUTM4KEP	91201204	.	NUT, M4 KEPS	
31	4	DB330	91200667	C	STANDOFF, .M5-.0.8 X .42.7 HEX W-F STEEL	
30	4	SCREWM4AC20SSP	91100520	.	SCREW, M5 SOCKET CAP 20 SS W/PATCH	
29	4	SCREWM4AC10SSP	91100510	.	SCREW, M5 SOCKET CAP 10 SS W/PATCH	
27	14	SCREWM4AB10BZP	91010510	.	SCREW, M5 BUTTON 10 BZ W/PATCH	
26	8	SCREWM4AB08BZP	91010408	.	SCREW, M4 BUTTON 08 BZ W/PATCH	
25	6	SCREWM3AB06BZP	91010306	.	SCREW, M3 BUTTON SOCKET HD 06 BZ W/PATCH	
24	2	SCREWM4AC25W-BZ	91000425	.	SCREW, M4 SOCKET CAP 25 BZ SEMS	
23	8	SCREWM4AC08BZ	91000408	.	SCREW, M4 SOCKET CAP 08 BZ SEMS	
22	4	SCREWM4AC06W-BZ	91000406	.	SCREW, M4 SOCKET CAP 06 BZ SEMS	
21	1	CAP .090X.437ID .SILVER	90724014	.	CAP, .090 X .437 I.D., PUSH ON, NY, SILVER	
20	4	SCREW-19PP250TL-SZ	90709123	.	SCREW, 6-19 PHIL PAN 1/4 SZ PLASTITE	
19	2	SCREW10-14PP500TL-SZ	90709062	.	SCREW, #10 PHIL PAN 1/2 PLASTITE SZ	
18	1	SCREW-32AS188BZ	90707093	.	SCREW, 6-32 SOCKET SET 3/16 BO PTCH FT PT	
17	1	SP132	90706083	A	WASHER, THRUST, OPTICAL MODULE ASSY	
16	3	WASHER10-20X440SS	90706012	.	WASHER, FLAT #10 SS	
15	2	SCREW-18SH875ABTYPE-SS	90704040	.	SCREW, #8 HEX HEAD 7/8 SHEET METAL SS	
14	4	STANDOFF, M4X6, M-F	90702376	.	STANDOFF, 6MM X 6MM L W/F M4 ALUM	
13	3	RETAINER, PUSH, 5MM	90701364	.	RETAINER, PUSH-ON, 5MM SHAFT	
12	1	SPRING360, 112GEXT	90701340	.	SPRING, EXTENSION, 360 X 1.12 LG	
11	1	SW329	90701187	-	STOP, WHEEL RETAINER	
10	6	SCREWM4AC10W-BZ	91000410	.	SCREW, M4 SOCKET CAP 10 BZ SEMS	
9	1	CATA056	80480013	A	COVER, ASSY YOKE ARM, LATCH SIDE DL	
8	1	CATA055	80480011	A	COVER, ASSY YOKE ARM DLI	
7	2	FSA089	80360009	A	DAMPENER, BRAKE ASSY PAN X-SPOT/SG	
6	1	TW547	99080327	A	PLATE, TILT STOP V2	
5	1	DB134	80071849	D	LATCH, PAN LEVER	
4	2	CAT181	80071806	E	PLATE, TILT BEARING RETAINER BLN DLI	
3	4	TW542	80070473	A	PLATE, COUNTERWEIGHT, ONE SG	
2	2	TW517	80070464	A	STOP, TILT TUBE SG	
1	1	DB143	80070392	A	PLATE, DETENT, PAN LATCH, PLATED DL2	
ITEM NO. QTY. FILENAME					REV	DESCRIPTION
BILL OF MATERIALS						



UNLESS OTHERWISE SPECIFIED:	RELEASE DATE:	CE:	High End	2105 GRACY FARMS LANE AUSTIN, TEXAS 78758 1527 836-2244 FAX (512) 832-4128 http://www.highend.com	
DIMENSIONAL TOLERANCES: 0 PLACE DECIMAL = ±0.38 1 PLACE DECIMAL = ±0.25 2 PLACE DECIMALS = ±0.13 ANGLES = ±0.5	ENG: X. BICKERS MEG: MEG:	QA: DRW: PETE PHILLIPS			
FOR PAINTED PARTS REFER TO ENG. SPEC. MANUAL W-0592	INTERPRET DIMENSIONS PER ASME Y14.5M-1994 THIRD ANGLE PROJECTION DIMENSIONS ARE IN MILLIMETERS	FINISH: NA	PART NO. INTERNAL	DRAWING NO. TZA003	REV. 6
ALL COMPONENTS, MATERIALS AND FINISHES TO BE BANS COMPLIANT	CHARTED			DO NOT SCALE	SCALE: 0.286
MIN. HOLE MIN. HOLE FLATNESS THICKNESS					SHEET: 1 OF 4

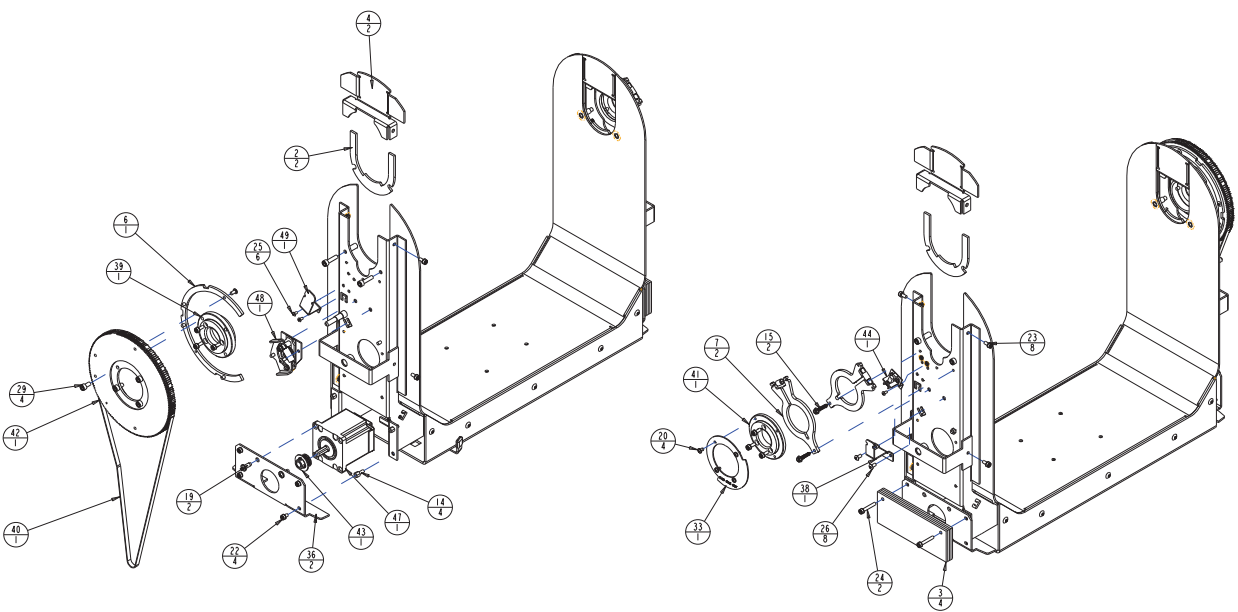
PROPRIETARY NOTICE:
THIS DOCUMENT CONTAINS CONFIDENTIAL AND PROPRIETARY INFORMATION OF HIGH END SYSTEMS INC., ALSO DBA LIGHTWAVE RESEARCH, AND IS GIVEN TO THE RECEIVER IN CONFIDENCE. THE RECEIVER ACCEPTS AND AGREES THAT, EXCEPT AS AUTHORIZED BY HIGH END SYSTEMS, THE RECEIVER WILL NOT PERMIT THE USE OF THE DOCUMENT OR ANY COPY THEREOF OR THE INFORMATION HEREIN, WILL NOT COPY OR REPRODUCE THE DOCUMENT, WILL NOT DISCLOSE TO OTHERS EITHER THE DOCUMENT OR THE INFORMATION THEREIN, AND WILL UPON COMPLETION OF THE NEED TO RETAIN THE DOCUMENT, OR UPON DEMAND, RETURN THE DOCUMENT WITHOUT RETAINING ANY OF THE INFORMATION CONTAINED THEREIN IN ANY FORM WHATSOEVER.



DISPLETEARY NOTICE
 THIS DOCUMENT CONTAINS CONFIDENTIAL AND PROPRIETARY INFORMATION OF HIGH END SYSTEMS INC., ALSO DBA LIGHTWAVE RESEARCH AND IS GIVEN TO THE RECEIVER IN CONFIDENCE. THE RECEIVER ACCEPTS AND AGREES THAT, EXCEPT AS AUTHORIZED BY HIGH END SYSTEMS, THE RECEIVER WILL NOT PERMIT THE USE OF THE DOCUMENT OR ANY COPY THEREOF OR THE INFORMATION HEREIN, WILL NOT COPY OR REPRODUCE THE DOCUMENT, WILL NOT DISCLOSE TO OTHERS EITHER THE DOCUMENT OR THE INFORMATION THEREIN, AND WILL UPON COMPLETION OF THE NEED TO RETAIN THE DOCUMENT, OR UPON DEMAND, RETURN THE DOCUMENT WITHOUT RETAINING ANY OF THE INFORMATION CONTAINED THEREIN IN ANY FORM WHATSOEVER.

UNLESS OTHERWISE SPECIFIED:	RELEASE DATE:	CE:	High End	2105 GRACY FARMS LANE AUSTIN, TEXAS 78758 1 (512) 836-2244 FAX (512) 832-4128 http://www.highend.com	
DIMENSIONAL TOLERANCES:	ENG: K. BICKERS	DA:			
0 PLACE DECIMAL: ±0.38	MEG:				
1 PLACE DECIMAL: ±0.25	MEG:	DRW: PETE PHILLIPS			
2 PLACE DECIMALS: ±0.13	MEG:				
ANGLES: ±0.5°					
FOR PAINTED PARTS REFER TO ENG. SPEC. MANUAL W1-0592	DESCRIPTION: YOK. SUB-ASSY MEA4				
ALL COMPONENTS: MATTERING AND FINISHES TO BE BANS COMPLIANT	FINISH: NA				
W.T. UNIT:	INTERPRET DIMENSIONS PER ASME Y14.5M-1994	PART NO. INTERNAL TZA003	DRAWING NO.	REV. 6	
W.T. UNIT:	THIRD ANGLE PROJECTION	DO NOT SCALE	SCALE: 0.280	SHEET: 2 OF 4	
W.T. UNIT:	DIMENSIONS ARE IN MILLIMETERS				
W.T. UNIT:					

TZA003

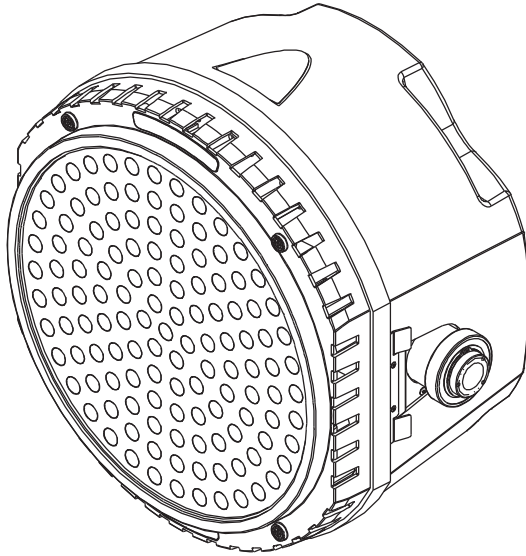


DISPLETEARY NOTICE
 THIS DOCUMENT CONTAINS CONFIDENTIAL AND PROPRIETARY INFORMATION OF HIGH END SYSTEMS INC., ALSO DBA LIGHTWAVE RESEARCH AND IS GIVEN TO THE RECEIVER IN CONFIDENCE. THE RECEIVER ACCEPTS AND AGREES THAT, EXCEPT AS AUTHORIZED BY HIGH END SYSTEMS, THE RECEIVER WILL NOT PERMIT THE USE OF THE DOCUMENT OR ANY COPY THEREOF OR THE INFORMATION HEREIN, WILL NOT COPY OR REPRODUCE THE DOCUMENT, WILL NOT DISCLOSE TO OTHERS EITHER THE DOCUMENT OR THE INFORMATION THEREIN, AND WILL UPON COMPLETION OF THE NEED TO RETURN THE DOCUMENT, OR UPON DEMAND, RETURN THE DOCUMENT WITHOUT RETAINING ANY OF THE INFORMATION CONTAINED THEREIN IN ANY FORM WHATSOEVER.

UNLESS OTHERWISE SPECIFIED:	RELEASE DATE:	CE:	High End	2105 GRACY FARMS LANE AUSTIN, TEXAS 78758 (512) 836-2244 FAX (512) 832-4128 http://www.highend.com	
DIMENSIONAL TOLERANCES:	ENG: K. BICKERS	DA:			
0 PLACE DECIMAL: ±0.38	MEG:				
1 PLACE DECIMAL: ±0.25	MEG:	DRW: PETE PHILLIPS			
2 PLACE DECIMALS: ±0.13	MEG:				
ANGLES: ±0.5°					
FOR PAINTED PARTS REFER TO:	DESCRIPTION:				
ENG. SPEC. MANUAL W1-0592	YORK, SUB-ASSY MEA4				
ALL COMPONENTS: MATERIALS AND FINISHES TO BE BANS COMPLIANT	FINISH:				
W/IN. BARS:	NA				
FLATNESS:					
THICKNESS:					
VOLUME:					
	INTERPRET DIMENSIONS PER	SI	PART NO.	DRAWING NO.	REV.
	ASME Y14.5M-1994	METRIC	INTERNAL	TZA003	6
	THIRD ANGLE PROJECTION	A1			
	DIMENSIONS ARE IN MILLIMETERS		DO NOT SCALE	SCALE: 0.280	SHEET: 3 OF 4

TZA011

REV.	DESCRIPTION	DATE	ENG	ECO #	APPR
1	CREATE DRAWING	04APR08	PP		MB
2	UPDATE REVISION FOR TZA004 & TZA006	01MAY08	PP		MB
3	UPDATE REVISION FOR TZA006	06MAY08	PP		MB

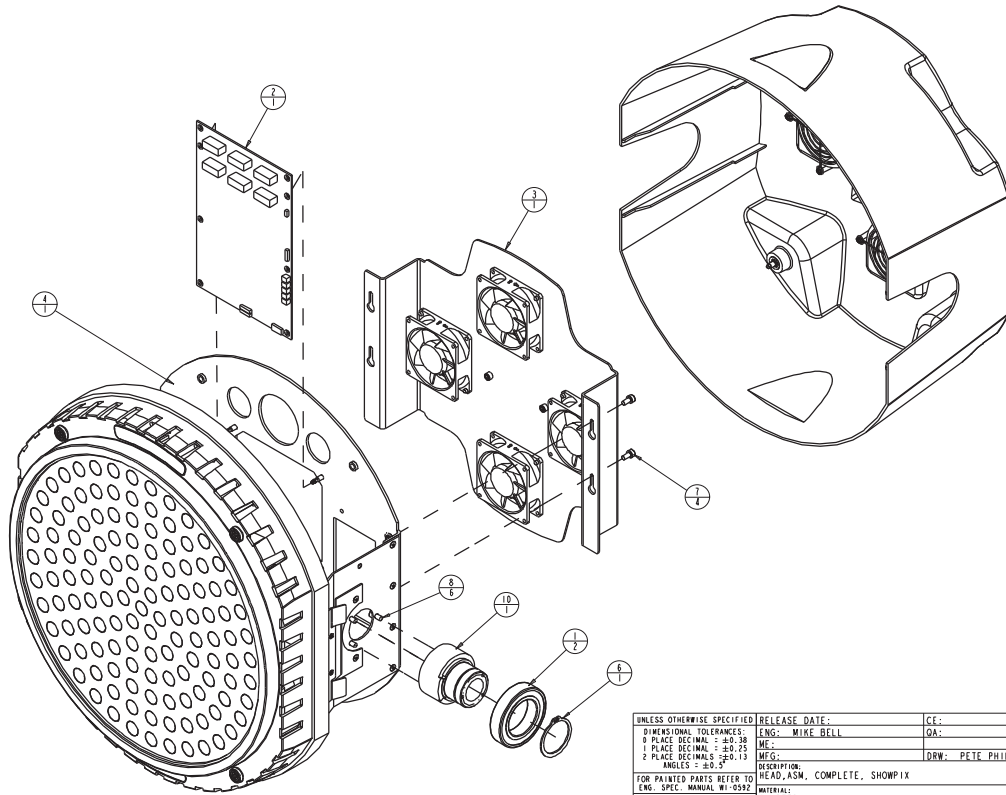


10	1	TW361	99140021	-	TUBE, TILT W/ RETAINING GROOVE
9	1	CA327	99140018	A	TUBE, TILT CATALYST HEAD, DLI
8	6	SCREWSAC10SSP	91100510	-	SCREW, M5 SOCKET CAP 10 SS W/PATCH
7	4	SCREWSAC10BZ	91100510	-	SCREW, M5 SOCKET CAP 10 BZ SEMS
6	1	RING, RETAINING, ITS, SHAFT	90701375	-	RING, RETAINING, EXTERNAL, 1.618
5	1	TZA033	TBD	3	REAR BEZEL ASSEMBLY
4	1	TZA004	80450096	A	HEAD, ASM, SHOWPIX
3	1	TZA006	TBD	5	FAN BULKHEAD ASSEMBLY
2	1	TZ421	80010213EF	3	BOARD, CPU HUB LED LOGIC ASSEMBLY
1	2	BEARING, 45-75MM, BALL	90719061	-	BEARING, 45MM, 6009, 2RS
ITEM NO.	QTY.	FILENAME	PART NO.	REV	DESCRIPTION
BILL OF MATERIALS					

UNLESS OTHERWISE SPECIFIED DIMENSIONAL TOLERANCES: 0 PLACE DECIMAL = ±0.38 1 PLACE DECIMAL = ±0.25 2 PLACE DECIMALS = ±0.13 ANGLES = ±0.5°	RELEASE DATE: ENG: MIKE BELL ME: MEG: DRAW: PETE PHILLIPS	CE: QA: DRW:	High End 2105 GRACY FARMS LANE AUSTIN, TEXAS 78758 (512) 836-2242 FAX (512) 837-4128 http://www.highend.com	Lightwave RESEARCH
FOR PAINTED PARTS REFER TO ENG. SPEC. MANUAL W-0582	DESCRIPTION: HEAD, ASM, COMPLETE, SHOWPIX	MATERIAL: FINISH:	PART NO. DRAWING NO. REV. INTERNAL TZA011 3	
ALL COMPONENTS, MATERIALS AND FINISHES TO BE AS COMPLIANT	CHARTED MIN. SHAFT MIN. HOLES FLATNESS CIRCULARITY VOLUME	INTERPRET DIMENSIONS PER ASME Y14.5M-1994 THIRD ANGLE PROJECTION DIMENSIONS ARE IN MILLIMETERS	SI METRIC A1	DO NOT SCALE SCALE: 0,200 SHEET: 1 OF 3

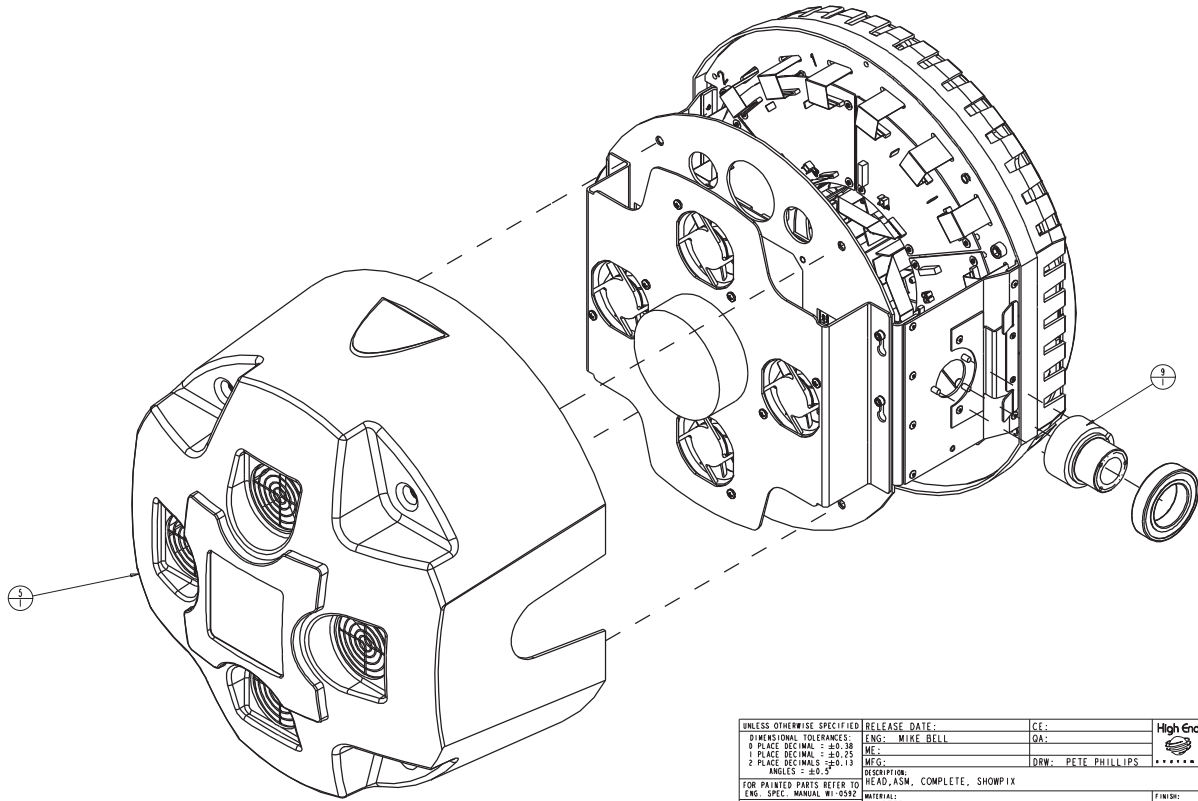
PROPRIETARY NOTICE

THIS DOCUMENT CONTAINS CONFIDENTIAL AND PROPRIETARY INFORMATION OF HIGH END SYSTEMS, INC., (ALSO BAA LIGHTWAVE RESEARCH) AND IS GIVEN TO THE RECEIVER IN CONFIDENCE. THE RECEIVER ACCEPTS AND AGREES THERE, EXCEPT AS AUTHORIZED BY HIGH END SYSTEMS. THE RECEIVER WILL NOT PERMIT THE USE OF THE DOCUMENT OR ANY COPY THEREOF OR THE INFORMATION THEREIN, WILL NOT COPY OR FURTHER COPYING THE DOCUMENT WILL NOT DISCLOSE TO OTHERS EITHER THE DOCUMENT OR THE INFORMATION THEREIN, AND WILL UPON COMPLETION OF THE NEED TO RETAIN THE DOCUMENT, OR UPON DEMAND, RETURN THE DOCUMENT, WITHOUT RETAINING ANY OF THE INFORMATION CONTAINED THEREIN IN ANY FORM WHATSOEVER.

**PROPRIETARY NOTICE**



THIS DOCUMENT CONTAINS CONFIDENTIAL AND PROPRIETARY INFORMATION OF HIGH END SYSTEMS, INC., ALSO ORCA LIGHTWAVE RESEARCH AND IS GIVEN TO THE RECEIVER IN CONFIDENCE. THE RECEIVER ACCEPTS AND AGREES THAT, EXCEPT AS AUTHORIZED BY HIGH END SYSTEMS, THE RECEIVER WILL NOT PERMIT THE USE OF THE DOCUMENT OR ANY COPY THEREOF OR THE INFORMATION THEREIN, WILL NOT COPY OR FURTHER COPY THE DOCUMENT, WILL NOT DISCLOSE TO OTHERS EITHER THE DOCUMENT OR THE INFORMATION THEREIN, AND WILL UPON COMPLETION OF THE NEED TO RETAIN THE DOCUMENT, OR UPON DEMAND, RETURN THE DOCUMENT WITHOUT RETAINING ANY OF THE INFORMATION CONTAINED THEREIN IN ANY FORM WHATSOEVER.

UNLESS OTHERWISE SPECIFIED DIMENSIONAL TOLERANCES: 0 PLACE DECIMAL = ±0.38 1 PLACE DECIMAL = ±0.25 2 PLACE DECIMALS = ±0.13 ANGLES = ±0.5°	RELEASE DATE: ENGR: MIKE BELL ME: MEG: DRAWN: PETE PHILLIPS	CE: QA: DEW: PETE PHILLIPS	High End 2100 GRACY FARMS LANE AUSTIN, TEXAS 78758 (512) 836-2242 FAX: (512) 837-4128 http://www.highend.com	ORCA LIGHTWAVE RESEARCH
FOR PAINTED PARTS REFER TO ENG. SPEC. MANUAL W-0582	DESCRIPTION: HEAD_ASM, COMPLETE, SHOWPIX	MATERIAL: FINISH:		
ALL COMPONENTS, MATERIALS AND FINISHES TO BE AS COMPLIANT	CHARTED	PART NO. INTERNAL TZA011		
MIN. SHFT	INTERPRET DIMENSIONS PER ASME Y14.5M-1994	SI METRIC A1	DRAWING NO.	REV. 3
MIN. HOLES	THIRD ANGLE PROJECTION	DO NOT SCALE	SCALE: 0.200	SHEET: 2 OF 3
FLATNESS	DIMENSIONS ARE IN MILLIMETERS			
TOLERANCES				
VOLUME				

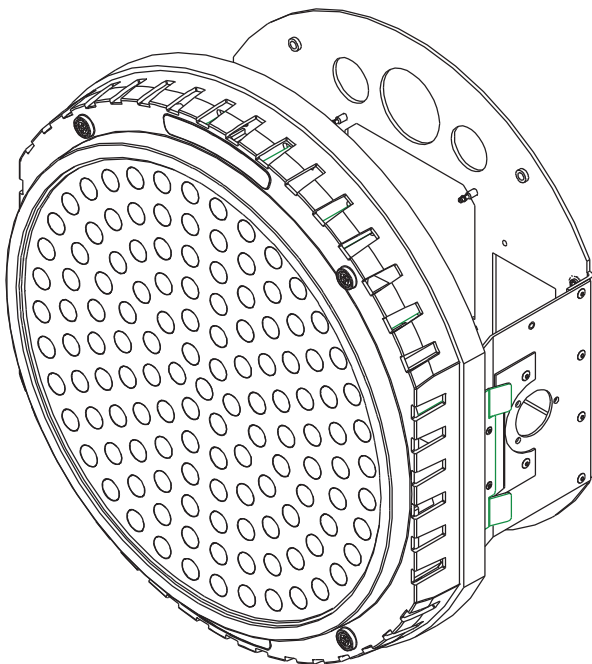


PROPRIETARY NOTICE

THIS DOCUMENT CONTAINS CONFIDENTIAL AND PROPRIETARY INFORMATION OF HIGH END SYSTEMS, INC., ALSO ORA (LIGHTWAVE RESEARCH) AND IS GIVEN TO THE RECEIVER IN CONFIDENCE. THE RECEIVER ACCEPTS AND AGREES THAT, EXCEPT AS AUTHORIZED BY HIGH END SYSTEMS, THE RECEIVER WILL NOT PERMIT THE USE OF THE DOCUMENT OR ANY COPY THEREOF OR THE INFORMATION THEREIN, WILL NOT COPY OR FURTHER COPY THE DOCUMENT, WILL NOT DISCLOSE TO OTHERS EITHER THE DOCUMENT OR THE INFORMATION THEREIN, AND WILL UPON COMPLETION OF THE NEED TO RETURN THE DOCUMENT, OR UPON DEMAND, RETURN THE DOCUMENT, WITHOUT RETAINING ANY OF THE INFORMATION CONTAINED THEREIN IN ANY FORM WHATSOEVER.

UNLESS OTHERWISE SPECIFIED	RELEASE DATE:	CE:	 2100 GRACY FARMS LANE AUSTIN, TEXAS 78758 (512) 836-2242 FAX (512) 837-4128 ***** http://www.highend.com	
DIMENSIONAL TOLERANCES:	ENGR: MIKE BELL	QA:		
0 PLACE DECIMAL = ±0.38	ME:			
1 PLACE DECIMAL = ±0.25	MEG:	DRW: PETE PHILLIPS		
2 PLACE DECIMALS = ±0.13	DESCRIPTION:			
ANGLES = ±0.5°	FOR PAINTED PARTS REFER TO			
	ENG. SPEC. MANUAL W-0582			
	ALL COMPONENTS, MATERIALS AND FINISHES TO BE AS COMPLIANT		MATERIAL:	FINISH:
	MIN. SHFT		CHARTED	
	MIN. SHFT		INTERPRET DIMENSIONS PER	PART NO.
	FLATNESS		ASME Y14.5M-1994	INTERNAL TZA011
	CIRCULARITY		THIRD ANGLE PROJECTION	DRAWING NO.
	VOLUME		DIMENSIONS ARE IN MILLIMETERS	3
			SI METRIC A1	REV.
			DO NOT SCALE	SCALE: 0.200
				SHEET: 3 OF 3

TZA004



REV.	DESCRIPTION	DATE	ENG	ECO #	APPR
1	CREATE DRAWING	3DEC07	PP		MB
2	REMOVE ITEM 2 Ø 4-40 AND REPLACE WITH 6-32	14DEC07	PP		MB
3	CHANGE ITEM 2 TO UNSLOTTED HEX HEAD	15FEB08	PP		MB
4	ADD ITEMS 13 & 4 TO ASSEMBLY	05MAR08	PP		MB
5	UPDATE ASSEMBLY INSTRUCTIONS, RIBBON CABLE VIEWS	31MAR08	PP		MB
6	ADD SYMIX NUMBER, CHANGE DESCRIPTION	02MAR08	PP		MB
-	PRODUCTION RELEASE	03APR08	PP		MB
A	ADD STANDOFF'S 1 ITEM 123 6 PLACES, ADD TORQUE SPECS, JUMPER SETTINGS FOR LED CONTROL BOARD #4.	28APR08	PP	2467	MB
B	UPDATE REVISION FOR TZA032	06MAY08	PP	2469	MB

ITEM NO.	QTY.	FILENAME	PART NO.	REV.	DESCRIPTION
13	6	PCB_SUPPORT_SCREW_MOUNT	90702383EF	1	SUPPORT, CURCUIT BOARD, SCREW MOUNT
12	6	TZ_16CONDUCTOR_FFPC4	90409319EF	1	16 CONDUCTOR FFC (MOLEX 21039-0323)
11	18	TZ_26CONDUCTOR_FFPC3	90409318EF	1	26 CONDUCTOR FFC (MOLEX 21039-0431)
10	6	TZ429	8066026EF	4	BOARD, ROB LED CONTROL ASSY
9	1	TZ426_ASSY	8066024EF	9	BOARD, RGB ARRAY CENTER CIRCLE ASSY
8	6	TZ425_ASSY	8066022EF	11	BOARD, RGB ARRAY 60 DEGREE PIE ASSY
7	4	SCREWSAF10BZ	91540510	.	SCREW,MS SOCKET CSNK FLAT 10 BZ
6	4	SCREWSAC16SSP	91100816	.	SCREW,MS SOCKET CAP 16 SS W/PATCH
5	22	SCREW_6-32_THRD_ROLL_25L_UNSL0T	90110018	.	SCREW_6-32_3/16 HEX 1/4 THD FORM. NO SLOT
4	4	TZ307	90702381	.	STANDOFF, 12.7(.50) HEX, L=43.43(1.71)
3	1	TZA032	80450095	A	ASSEMBLY, FRONT BEZEL, ME44
2	1	TZA009	80110057	B	CHASSIS, HEAD, ME44
1	1	TZA008	80110056	A	PLATE ASSEMBLY, HEAT SINK ARRAY
ITEM NO., QTY.		FILENAME	PART NO.	REV.	DESCRIPTION

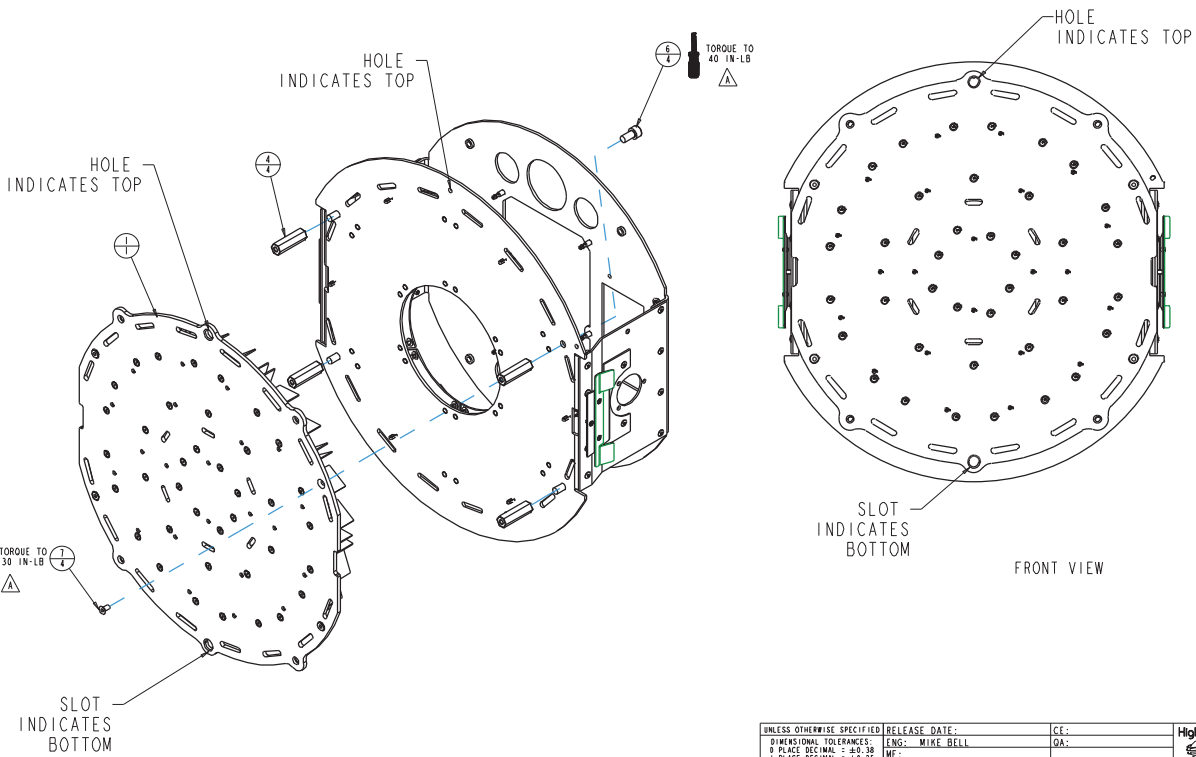
BILL OF MATERIALS

UNLESS OTHERWISE SPECIFIED	RELEASE DATE:	CE:	High End 2105 GRACY FARNS LANE AUSTIN, TEXAS 78758 (512) 836-2242 FAX (512) 836-4128 ***** http://www.highend.com	 Lightwave RESEARCH
DIMENSIONAL TOLERANCES:	ENG: MIKE BELL	QA:		
0 PLACE DECIMAL = ±0.38	ME:	DRW: PETE PHILLIPS		
1 PLACE DECIMAL = ±0.25	MG:			
2 PLACE DECIMAL = ±0.13	DESCRIPTION:			
ANGLES = ±0.5°	FOR PAINTED PARTS REFER TO			
ENG. SPEC. MANUAL W-0582	READ, ASM, SHOWPIX			
ALL COMPONENTS, MATERIALS AND FINISHES TO BE AS COMPLIANT	MATERIAL:			
MIN. SHFT	CHARITRED			
MIN. HOIT	INTERPRET DIMENSIONS PER			
LAYERS	ASME Y14.5M-1994			
TOLERANCES	THIRD ANGLE PROJECTION			
VOLUME	DIMENSIONS ARE IN MILLIMETERS			

PROPRIETARY NOTICE

THIS DOCUMENT CONTAINS CONFIDENTIAL AND PROPRIETARY INFORMATION OF HIGH END SYSTEMS, INC., (A 50 AREA LIGHTWAVE RESEARCH) AND IS LOANED TO THE RECEIVER IN CONFIDENCE. THE RECEIVER ACCEPTS AND AGREES THAT, EXCEPT AS AUTHORIZED BY HIGH END SYSTEMS, THE RECEIVER WILL NOT PERMIT THE USE OF THE DOCUMENT OR ANY COPY THEREOF OR THE INFORMATION HEREIN, WILL NOT COPY OR FURTHER COPYING THE DOCUMENT WILL NOT DISCLOSE TO OTHERS EITHER THE DOCUMENT OR THE INFORMATION THEREIN, AND WILL UPON COMPLETION OF THE NEED TO RETURN THE DOCUMENT, OR UPON DEMAND, RETURN THE DOCUMENT, WITHOUT RETAINING ANY OF THE INFORMATION CONTAINED THEREIN IN ANY FORM WHATSOEVER.

PART NO.	DRAWING NO.	REV.
80450096	TZA004	B
DO NOT SCALE	SCALE: 0,200	SHEET: 1 OF 8



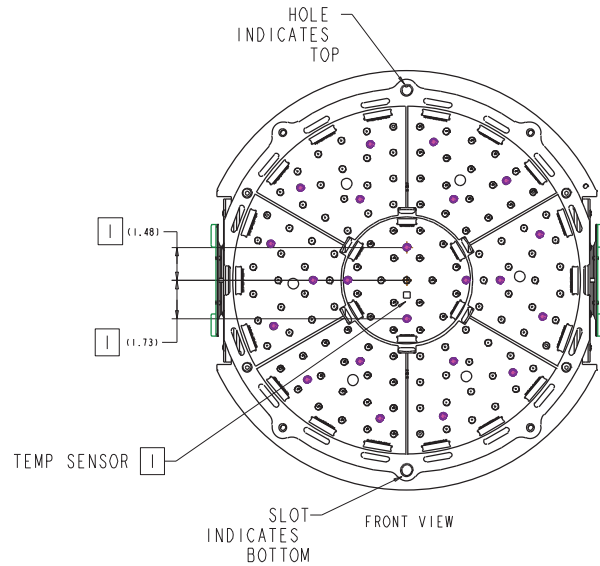
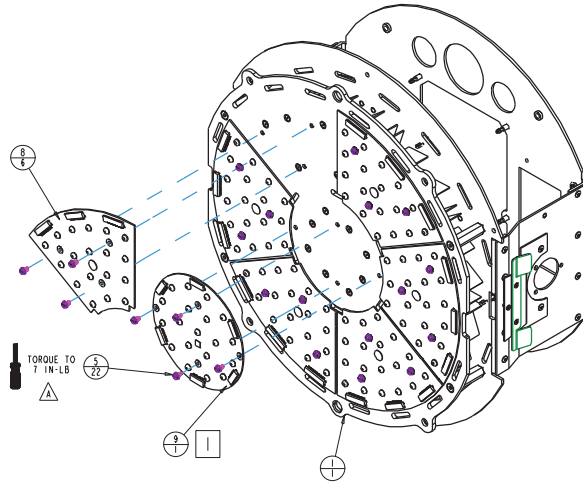
PROPRIETARY NOTICE

THIS DOCUMENT CONTAINS CONFIDENTIAL AND PROPRIETARY INFORMATION OF HIGH END SYSTEMS INC., (ALSO DBA LIGHTWAVE RESEARCH) AND IS GIVEN TO THE RECEIVER IN CONFIDENCE. THE RECEIVER ACCEPTS AND AGREES THAT, EXCEPT AS AUTHORIZED BY HIGH END SYSTEMS, THE RECEIVER WILL NOT PERMIT THE USE OF THE DOCUMENT OR ANY COPY THEREOF OR THE INFORMATION THEREIN, WILL NOT COPY OR REPRODUCE THE DOCUMENT, WILL NOT DISCLOSE TO OTHERS EITHER THE DOCUMENT OR THE INFORMATION THEREIN, AND WILL UPON COMPLETION OF THE NEED TO RETAIN THE DOCUMENT, OR UPON DEMAND, RETURN THE DOCUMENT WITHOUT RETAINING ANY OF THE INFORMATION CONTAINED THEREIN IN ANY FORM WHATSOEVER.

UNLESS OTHERWISE SPECIFIED:	RELEASE DATE:	CE:	High End	2100 GRACY FARMS LANE AUSTIN, TEXAS 78758	
DIMENSIONAL TOLERANCES:	ENGR: MIKE BELL	QA:		(512) 836-2242	
0 PLACE DECIMAL = ±0.38	MEG:	DRW: PETE PHILLIPS		FAX: (512) 837-4128	
1 PLACE DECIMAL = ±0.25	MEG:			***** http://www.highend.com	
2 PLACE DECIMALS = ±0.13	DESCRIPTION:				
ANGLES = ±0.5°	HEAD, ASM, SHOWPIX				
FOR PAINTED PARTS REFER TO	MATERIAL:				
ENG. SPEC. MANUAL W-0582	FINISH:				
ALL COMPONENTS, MATERIALS AND	CHARITRED				
FINISHES TO BE AS COMPLIANT	INTERPRET DIMENSIONS PER				
MIN. SHFT	ASME Y14.5M-1994				
MIN. SHFT	THIRD ANGLE PROJECTION				
FLATNESS					
CONCENTRIC					
VOLUME					

SI METRIC A1	PART NO. 80450096	DRAWING NO. TZA004	REV. B
DO NOT SCALE	SCALE: 0,200	SHEET: 2 OF 8	

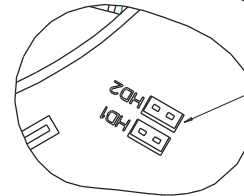
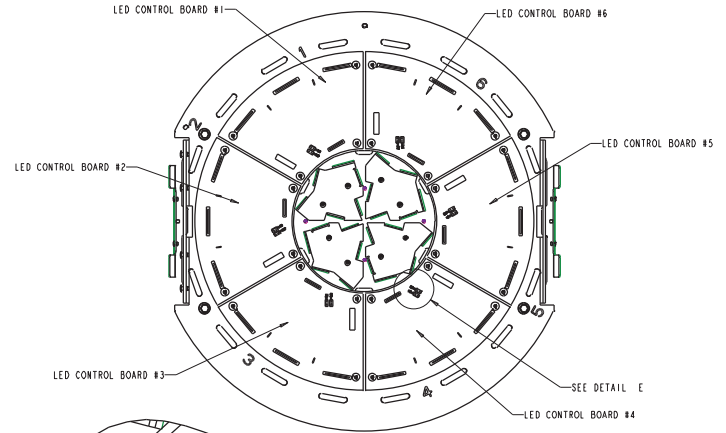
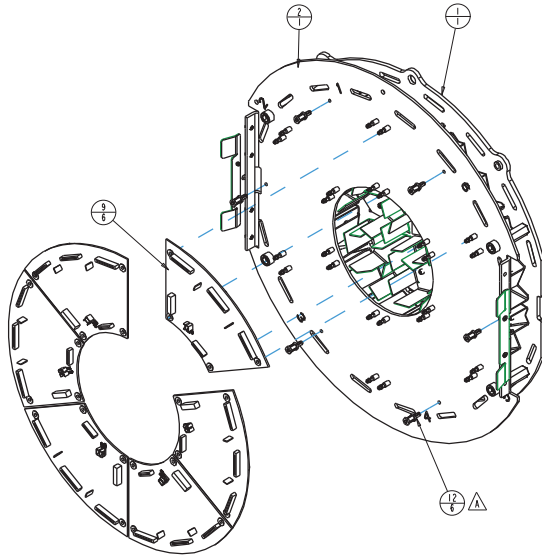
- 1 USE FRONT VIEW BELOW TO DETERMINE ASSEMBLY ORIENTATION OF CENTER ARRAY, MOUNTING HOLES ARE NOT SYMETRICAL TO THE CENTER OF THE PART.



PROPRIETARY NOTICE

THIS DOCUMENT CONTAINS CONFIDENTIAL AND PROPRIETARY INFORMATION OF HIGH END SYSTEMS INC., (ALSO DBA LIGHTWAVE RESEARCH) AND IS GIVEN TO THE RECEIVER IN CONFIDENCE. THE RECEIVER ACCEPTS AND AGREES THAT, EXCEPT AS AUTHORIZED BY HIGH END SYSTEMS, THE RECEIVER WILL NOT PERMIT THE USE OF THE DOCUMENT OR ANY COPY THEREOF OR THE INFORMATION THEREIN, WILL NOT COPY OR PRINT, COPYING THE DOCUMENT WILL NOT DISCLOSE TO OTHERS EITHER THE DOCUMENT OR THE INFORMATION THEREIN, AND WILL UPON COMPLETION OF THE NEED TO RETURN THE DOCUMENT, OR UPON DEMAND, RETURN THE DOCUMENT WITHOUT RETAINING ANY OF THE INFORMATION CONTAINED THEREIN IN ANY FORM WHATSOEVER.

UNLESS OTHERWISE SPECIFIED	RELEASE DATE:	CE:	High End	2100 GRACY FARMS LANE AUSTIN, TEXAS 78758	
DIMENSIONAL TOLERANCES:	ENG: MIKE BELL	DA:		(512) 836-2242 FAX: (512) 837-4128 http://www.highend.com	
0 PLACE DECIMAL = ±0.38	ME:				
1 PLACE DECIMAL = ±0.25	MEG:	DRW: PETE PHILLIPS			
2 PLACE DECIMALS = ±0.13					
HOLE S = ±0.5"					
FOR PAINTED PARTS REFER TO	DESCRIPTION:				
ENG. SPEC. MANUAL W-0582	READ, ASM, SHOWPIX				
	MATERIAL:				
ALL COMPONENTS, MATERIALS AND	CHARITRED				
FINISHES TO BE AS COMPLIANT					
WIR. SHFT	INTERPRET DIMENSIONS PER	SI	PART NO.	DRAWING NO.	REV.
WIR. SHFT	ASME Y14.5M-1994	METRIC	80450096	TZA004	B
FLATNESS	THIRD ANGLE PROJECTION	A1	DO NOT SCALE	SCALE: 0,200	SHEET: 3 OF 8
TOLERANCES	DIMENSIONS ARE IN MILLIMETERS				
VOLUME					



DETAIL E
SCALE: 3.000

TEMP SENSOR JUMPER ON
LED CONTROL BOARD #4
MUST BE IN HD2 POSITION

PROPRIETARY NOTICE

THIS DOCUMENT CONTAINS CONFIDENTIAL AND PROPRIETARY INFORMATION OF HIGH END SYSTEMS INC., (ALSO DBA LIGHTWAVE RESEARCH) AND IS GIVEN TO THE RECEIVER IN CONFIDENCE. THE RECEIVER ACCEPTS AND AGREES THAT, EXCEPT AS AUTHORIZED BY HIGH END SYSTEMS, THE RECEIVER WILL NOT PERMIT THE USE OF THE DOCUMENT OR ANY COPY THEREOF OR THE INFORMATION THEREIN, WILL NOT COPY OR FURTHER COPY THE DOCUMENT, WILL NOT DISCLOSE TO OTHERS EITHER THE DOCUMENT OR THE INFORMATION THEREIN, AND WILL UPON COMPLETION OF THE NEED TO RETAIN THE DOCUMENT, OR UPON DEMAND, RETURN THE DOCUMENT WITHOUT RETAINING ANY OF THE INFORMATION CONTAINED THEREIN IN ANY FORM WHATSOEVER.

UNLESS OTHERWISE SPECIFIED	RELEASE DATE:	CE:	High End 2100 GRACY FARMS LANE AUSTIN, TEXAS 78758 (512) 836-2242 FAX (512) 832-4128 http://www.highend.com	
DIMENSIONAL TOLERANCES:	ENGS:	QA:		
0 PLACE DECIMAL = ±0.38	ME:	DEW:		
1 PLACE DECIMAL = ±0.25	MEG:			
2 PLACE DECIMALS = ±0.13	DESCRIPTION:			
MILES = ±0.5"	FOR PAINTED PARTS REFER TO			
ENG. SPEC. MANUAL W-0582	MATERIAL:			FINDS:
ALL COMPONENTS, MATERIALS AND FINISHES TO BE AISC COMPLIANT	INTERPRET DIMENSIONS PER		SI	PART NO.
W/1: SHFT	ASME Y14.5M-1994		METRIC	TBD
W/2: SHFT	THIRD ANGLE PROJECTION		A1	DRAWING NO.
FLATNESS	DIMENSIONS ARE IN MILLIMETERS			TZA004
TOLERANCES			DO NOT SCALE	SCALE: 1.000
VOLUME				SHEET: 4 OF 8
				REV.
				1

SEE DETAIL C 3

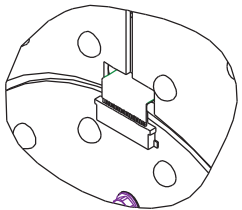
2 INSERT 16 PIN RIBBON CABLES, 6 EACH, INTO ZIF CONNECTORS ON CENTER LED ARRAY. USE DETAIL VIEWS A & B FOR REFERENCE. SEE SHEET 5 FOR CABLE FOLDING DETAILS.

3 INSERT 26 PIN RIBBON CABLES, 18 EACH, INTO ZIF CONNECTORS ON EACH OUTER LED ARRAY. USE DETAIL VIEWS B & C FOR REFERENCE. SEE SHEET 5 FOR CABLE FOLDING DETAILS.

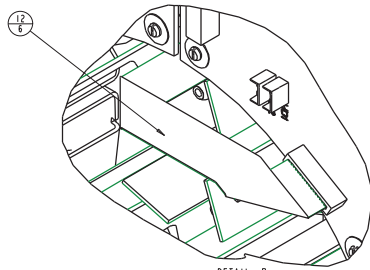
SEE DETAIL D 3

SEE DETAIL B 2

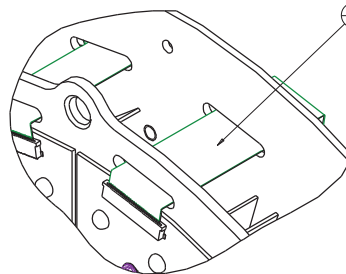
SEE DETAIL A 2



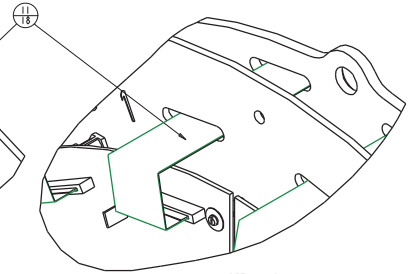
DETAIL A
SCALE 2,000



DETAIL B
SCALE 2,000



DETAIL C
SCALE 1,500

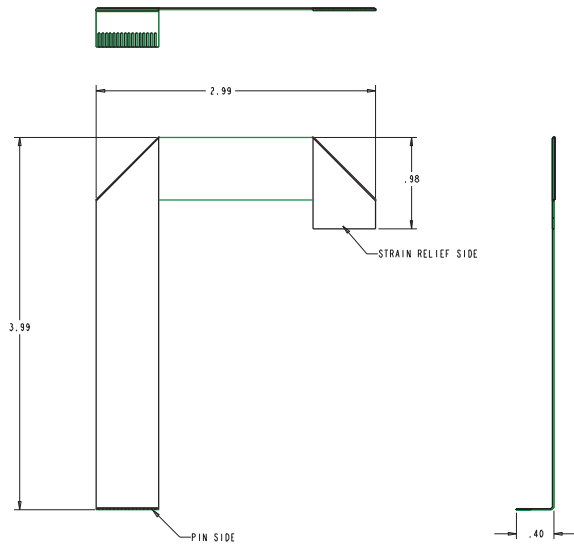


DETAIL D
SCALE 1,500

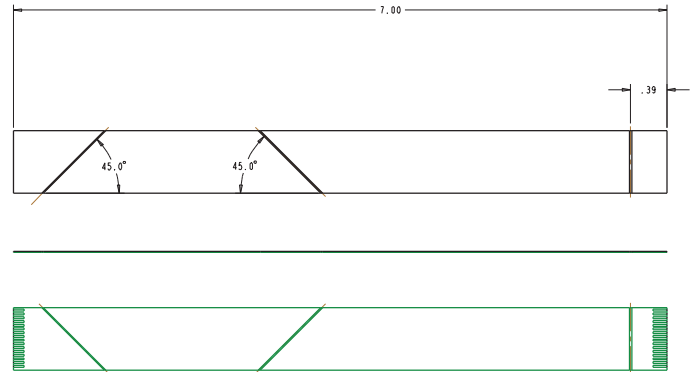
PROPRIETARY NOTICE
THIS DOCUMENT CONTAINS CONFIDENTIAL AND PROPRIETARY INFORMATION OF HIGH END SYSTEMS INC., (ALSO DBA LIGHTWAVE RESEARCH) AND IS GIVEN TO THE RECEIVER IN CONFIDENCE. THE RECEIVER ACCEPTS AND AGREES THAT, EXCEPT AS AUTHORIZED BY HIGH END SYSTEMS, THE RECEIVER WILL NOT PERMIT THE USE OF THE DOCUMENT OR ANY COPY THEREOF OR THE INFORMATION THEREIN, WILL NOT COPY OR FURTHER COPY THE DOCUMENT, WILL NOT DISCLOSE TO OTHERS EITHER THE DOCUMENT OR THE INFORMATION THEREIN, AND WILL UPON COMPLETION OF THE NEED TO RETAIN THE DOCUMENT, OR UPON DEMAND, RETURN THE DOCUMENT WITHOUT RETAINING ANY OF THE INFORMATION CONTAINED THEREIN IN ANY FORM WHATSOEVER.

UNLESS OTHERWISE SPECIFIED: DIMENSIONAL TOLERANCES: 0 PLACE DECIMAL = ±0.38 1 PLACE DECIMAL = ±0.25 2 PLACE DECIMALS = ±0.13 ANGLES = ±0.5°	RELEASE DATE: ENGR: MIKE BELL MEG: MEG: MEG:	CE: DA: DRW: PETE PHILLIPS	High End 2105 GRACY FARMS LANE AUSTIN, TEXAS 78758 (512) 836-2242 FAX (512) 837-4128 http://www.highend.com	
FOR PAINTED PARTS REFER TO ENG. SPEC. MANUAL W-0582	DESCRIPTION: HEAD, ASM, SHOWPIX	MATERIAL: FINISH:	PART NO. 80450096	
ALL COMPONENTS, MATERIALS AND FINISHES TO BE AS COMPLIANT	CHARITRED	INTERPRET DIMENSIONS PER ASME Y14.5M-1994 THIRD ANGLE PROJECTION DIMENSIONS ARE IN MILLIMETERS	SI METRIC A1	DRIVING NO. TZA004
MIN. HOLES PLATNESS SURFACES VOLUME		DO NOT SCALE	SCALE: 0,200	REV. B
				SHEET: 5 OF 8

4. USE FLAT VIEW BELOW AS A GUIDE TO BENDING RIBBON CABLE.
SCALE IS 1:1 IF PRINTED ON 11x17 SHEET.



SCALE 2.090



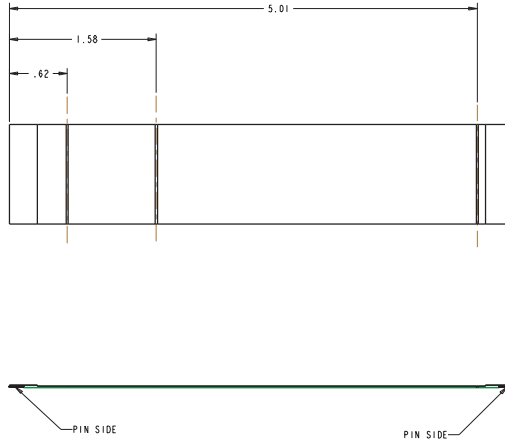
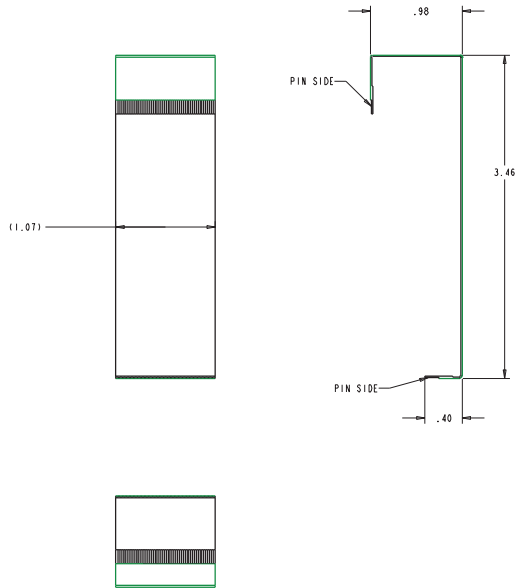
SCALE 2.090

PROPRIETARY NOTICE

THIS DOCUMENT CONTAINS CONFIDENTIAL AND PROPRIETARY INFORMATION OF HIGH END SYSTEMS INC., ALSO ORA (ORBITAL) RESEARCH AND IS GIVEN TO THE RECEIVER IN CONFIDENCE. THE RECEIVER ACCEPTS AND AGREES THAT, EXCEPT AS AUTHORIZED BY HIGH END SYSTEMS, THE RECEIVER WILL NOT PERMIT THE USE OF THE DOCUMENT OR ANY COPY THEREOF OR THE INFORMATION THEREIN, WILL NOT COPY OR FURTHER COPY THE DOCUMENT, WILL NOT DISCLOSE TO OTHERS EITHER THE DOCUMENT OR THE INFORMATION THEREIN, AND WILL UPON COMPLETION OF THE NEED TO RETAIN THE DOCUMENT, OR UPON DEMAND, RETURN THE DOCUMENT WITHOUT RETAINING ANY OF THE INFORMATION CONTAINED THEREIN IN ANY FORM WHATSOEVER.


UNLESS OTHERWISE SPECIFIED	RELEASE DATE:	CE:	High End	2100 GRACY FARMS LANE AUSTIN, TEXAS 78758 (512) 836-2242 FAX (512) 837-4128 *****8 http://www.highend.com		
DIMENSIONAL TOLERANCES:	ENG: MIKE BELL	QA:				
0 PLACE DECIMAL = ±0.38	ME:	DRW: PETE PHILLIPS				
1 PLACE DECIMAL = ±0.25	MEG:					
2 PLACE DECIMALS = ±0.13						
MILES = ±0.5"						
FOR PAINTED PARTS REFER TO	DESCRIPTION:					
ENG. SPEC. MANUAL W-0582	HEAD, ASM, SHOWPIX					
ALL COMPONENTS, MATERIALS AND	MATERIAL:					
FINISHES TO BE AS COMPLIANT	CHARITRED					
WIR. SHFT	INTERPRET DIMENSIONS PER			PART NO. 80450096	DRAWING NO. TZA004	REV. B
WIR. SHFT	ASME Y14.3M-1994					
PLATERS	THIRD ANGLE PROJECTION		DO NOT SCALE	SCALE: 0.200	SHEET: 6 OF 8	
FINISHES	DIMENSIONS ARE IN MILLIMETERS					
VOLUME						

5. USE FLAT VIEW BELOW AS A GUIDE TO BENDING RIBBON CABLE.
SCALE IS 1:1 IF PRINTED ON 11x17 SHEET.

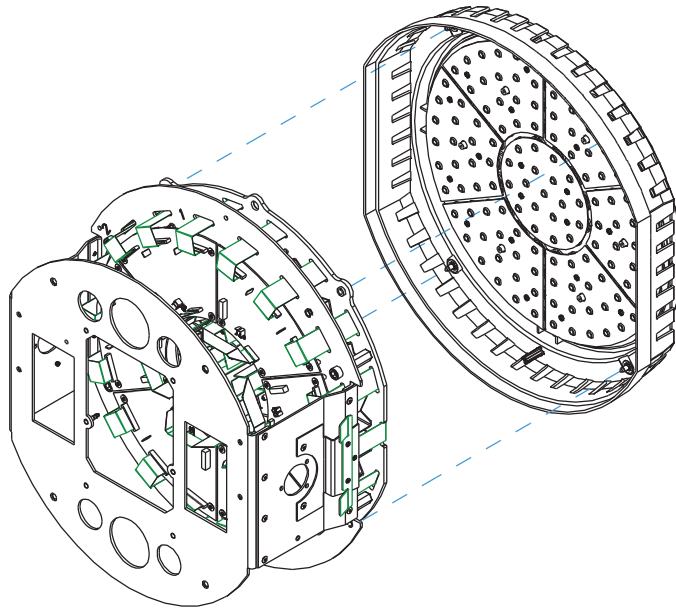


PROPRIETARY NOTICE

THIS DOCUMENT CONTAINS CONFIDENTIAL AND PROPRIETARY INFORMATION OF HIGH END SYSTEMS, INC., ALSO ORA (LIGHTWAVE RESEARCH) AND IS GIVEN TO THE RECEIVER IN CONFIDENCE. THE RECEIVER ACCEPTS AND AGREES THAT, EXCEPT AS AUTHORIZED BY HIGH END SYSTEMS, THE RECEIVER WILL NOT PERMIT THE USE OF THE DOCUMENT OR ANY COPY THEREOF OR THE INFORMATION THEREIN, WILL NOT COPY OR FURTHER COPY THE DOCUMENT, WILL NOT DISCLOSE TO OTHERS EITHER THE DOCUMENT OR THE INFORMATION THEREIN, AND WILL UPON COMPLETION OF THE NEED TO RETAIN THE DOCUMENT, OR UPON DEMAND, RETURN THE DOCUMENT WITHOUT RETAINING ANY OF THE INFORMATION CONTAINED THEREIN IN ANY FORM WHATSOEVER.

UNLESS OTHERWISE SPECIFIED	RELEASE DATE:	CE:	High End	2100 GRACY FARMS LANE AUSTIN, TEXAS 78758	 LIGHTWAVE RESEARCH
DIMENSIONAL TOLERANCES:	ENG: MIKE BELL	QA:		(512) 836-2242	
0 PLACE DECIMAL = ±0.38	ME:	DRW: PETE PHILLIPS		FAX (512) 837-4128	
1 PLACE DECIMAL = ±0.25	MEG:			***** http://www.highend.com	
2 PLACE DECIMALS = ±0.13	DESCRIPTION:				
ANGLES = ±0.5°	READ, ASM, SHOWPIX				
FOR PAINTED PARTS REFER TO	MATERIAL:				
ENG. SPEC. MANUAL W-0582	CHARITRED				
ALL COMPONENTS, MATERIALS AND	FINISHES TO BE AS COMPLIANT				
WIR. SHFT	INTERPRET DIMENSIONS PER				
WIR. SHFT	ASME Y14.5M-1994				
FLATNESS	THIRD ANGLE PROJECTION				
TOLERANCES	DIMENSIONS ARE IN MILLIMETERS				
VOLUME					




SI	PART NO.	DRAWING NO.	REV.
METRIC	80450096	TZA004	B
A1	DO NOT SCALE	SCALE: 0,200	SHEET: 7 OF 8



SCALE 0.500

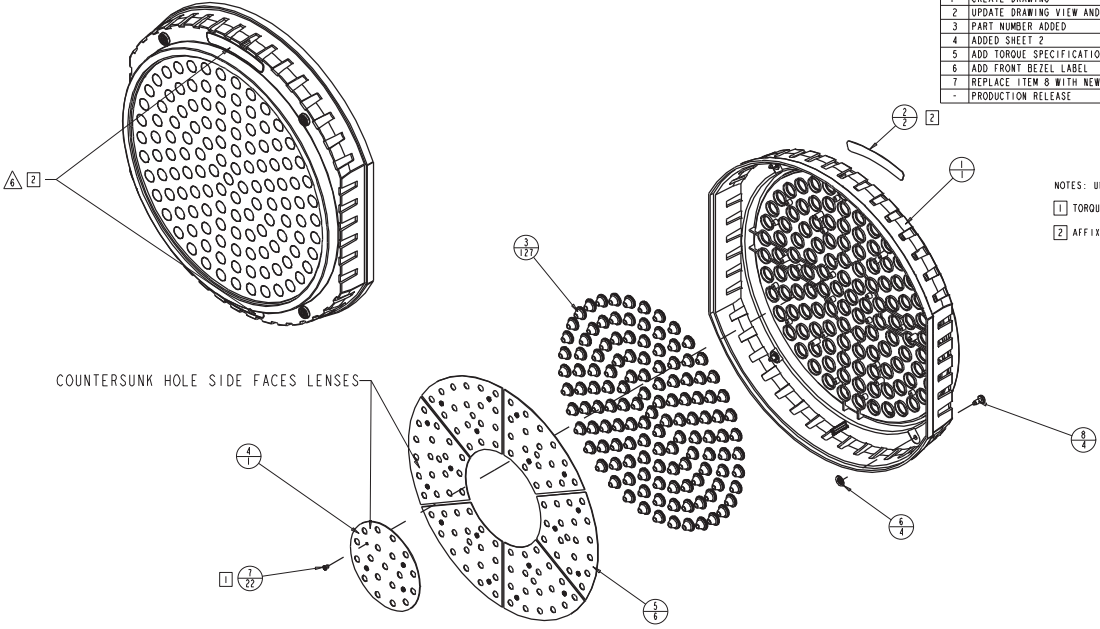
PROPRIETARY NOTICE

THIS DOCUMENT CONTAINS CONFIDENTIAL AND PROPRIETARY INFORMATION OF HIGH END SYSTEMS, INC., (ALSO DBA LIGHTWAVE RESEARCH) AND IS GIVEN TO THE RECEIVER IN CONFIDENCE. THE RECEIVER ACCEPTS AND AGREES THAT, EXCEPT AS AUTHORIZED BY HIGH END SYSTEMS, THE RECEIVER WILL NOT PERMIT THE USE OF THE DOCUMENT OR ANY COPY THEREOF OR THE INFORMATION THEREIN, WILL NOT COPY OR FURTHER COPY THE DOCUMENT, WILL NOT DISCLOSE TO OTHERS EITHER THE DOCUMENT OR THE INFORMATION THEREIN, AND WILL UPON COMPLETION OF THE NEED TO RETAIN THE DOCUMENT, OR UPON DEMAND, RETURN THE DOCUMENT WITHOUT RETAINING ANY OF THE INFORMATION CONTAINED THEREIN IN ANY FORM WHATSOEVER.

UNLESS OTHERWISE SPECIFIED	RELEASE DATE:	CE:	High End  2100 GRACY FARMS LANE AUSTIN, TEXAS 78758 (512) 836-2242 FAX (512) 837-4128 ***** http://www.highend.com	 RESEARCH
DIMENSIONAL TOLERANCES:	ENG: MIKE BELL	QA:		
0 PLACE DECIMAL = ±0.38	ME:	DRW: PETE PHILLIPS		
1 PLACE DECIMAL = ±0.25	WEG:			
2 PLACE DECIMALS = ±0.13	DESCRIPTION:			
ANGLES = ±0.5°	HEAD, ASM, SHOWPIX			
FOR PAINTED PARTS REFER TO	MATERIAL:			
ENG. SPEC. MANUAL W-0582	FINISH:			
ALL COMPONENTS, MATERIALS AND	CHARITRED			
FINISHES TO BE AS COMPLIANT	INTERPRET DIMENSIONS PER			
WIR. SHFT	ASME Y14.5M-1994			
WIR. SHFT	THIRD ANGLE PROJECTION			
FLATNESS	 SI METRIC A1			
TOLERANCES	PART NO. 80450096 DRAWING NO. TZA004 REV. B			
VOLUME	DO NOT SCALE SCALE: 0.200 SHEET: 8 OF 8			

TZA032

REV.	DESCRIPTION	DATE	ENG	ECO #	APPR
1	CREATE DRAWING	190CT07	MB		
2	UPDATE DRAWING VIEW AND BOM BALLOONS	14DEC07	PP		
3	PART NUMBER ADDED	25FEB08	PP		MB
4	ADDED SHEET 2	10MAR08	MB		
5	ADD TORQUE SPECIFICATION TO ITEM 6	10MAR08	PP		MB
6	ADD FRONT BEZEL LABEL	12MAR08	PP		MB
7	REPLACE ITEM 8 WITH NEW SOUTHCO FASTENER (BLACK)	31MAR08	PP		MB
-	PRODUCTION RELEASE	03APR08	PP		MB



NOTES: UNLESS OTHERWISE SPECIFIED.
 1 TORQUE TO 7in lbs, 22 PLACES.
 2 AFFIX LABEL IN RECESSED AREA OF BEZEL AS SHOWN, 2 PLACES.

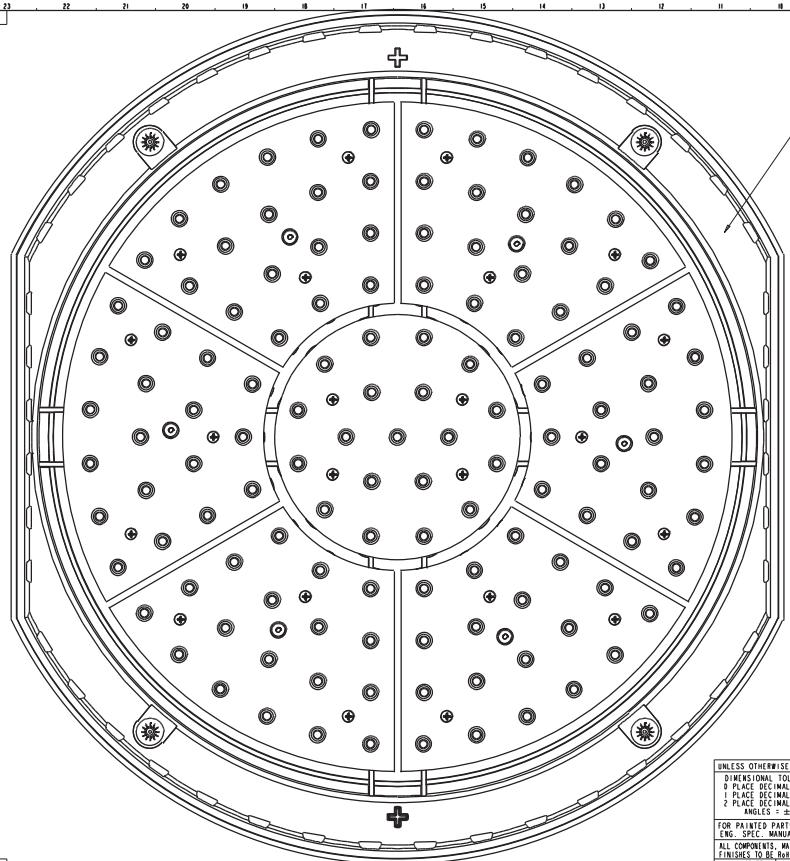
ITEM NO.	QTY.	FILENAME	PART NO.	REV	DESCRIPTION
8	4	SCREW_CAPTURE_SOUTHCO.BLACK	90712011	-	SCREW,CAPTIVE PHIL .23 OD X .611 LG CR 12-99-1011-05, BLACK
7	22	SCREWB-19PPB0250BZ	90709123	-	SCREW, PHIL PAN PLASTITE 6-19 X 1/4 BZ
6	4	RETAINER_CAPTURE_SS	90701362	-	RETAINER,CAPTIVE_SS,MED
5	6	TZ107	90701387	A	RETAINER, LENS, RADIAL ARRAY, MEA4
4	1	TZ106	90701386	A	RETAINER, LENS, CENTER ARRAY
3	127	TW541	99090077EF	-	LENS, PRO LIGHT, LED, 45 DEGREE DIFFUSION
2	2	TZ457	99310494	-	LABEL, FRONT BEZEL, MEA4
1	1	TZ201	99350099	-	BEZEL, FRONT A4

BILL OF MATERIALS

UNLESS OTHERWISE SPECIFIED:	RELEASE DATE:	CE:	High End 2105 GRACY FARMS LANE AUSTIN, TEXAS 78718 (512) 836-1242 FAX (512) 832-4128 ***** http://www.highend.com	
DIMENSIONAL TOLERANCES:	ENG: MIKE BELL	QA:		
0 PLACE DECIMAL: ±0.38	ME:			
1 PLACE DECIMAL: ±0.25	MEG:	DRW: PETE PHILLIPS		
2 PLACE DECIMALS: ±0.13	ASSEMBLY: FRONT BEZEL, MEA4			
ANGLES: ±0.5	FOR PAINTED PARTS REFER TO ENG. SPEC. MANUAL W1-0592			
ALL COMPONENTS, MATERIALS AND FINISHES TO BE RABS COMPLIANT		MATERIAL:	FINISH:	
INTERPRET DIMENSIONS PER ASME Y14.5M-1994		PART NO. 80450095		
THIRD ANGLE PROJECTION		DRAWING NO. TZA032		
DIMENSIONS ARE IN MILLIMETERS		DO NOT SCALE		
		SCALE: 0.250		
		SHEET: 1 OF 2		


PROPRIETARY NOTICE:
 THIS DOCUMENT CONTAINS CONFIDENTIAL AND PROPRIETARY INFORMATION OF HIGH END SYSTEMS INC., (ALSO DBA LIGHTWAVE RESEARCH) AND IS GIVEN TO THE RECEIVER IN CONFIDENCE.
 THE RECEIVER ACCEPTS AND AGREES THAT, EXCEPT AS NOTIFIED BY HIGH END SYSTEMS, THE RECEIVER WILL NOT PERMIT THE USE OF THE DOCUMENT OR ANY COPY THEREOF OR THE INFORMATION THEREIN, WILL NOT COPY OR PERMIT COPYING, THE DOCUMENT WILL NOT DISCLOSE TO OTHERS EITHER THE DOCUMENT OR THE INFORMATION THEREIN, AND WILL UPON COMPLETION OF THE NEED TO RETAIN THE DOCUMENT, OR UPON DEMAND, RETURN THE DOCUMENT, WITHOUT RETAINING ANY OF THE INFORMATION CONTAINED THEREIN IN ANY FORM WHATSOEVER.

TZA032



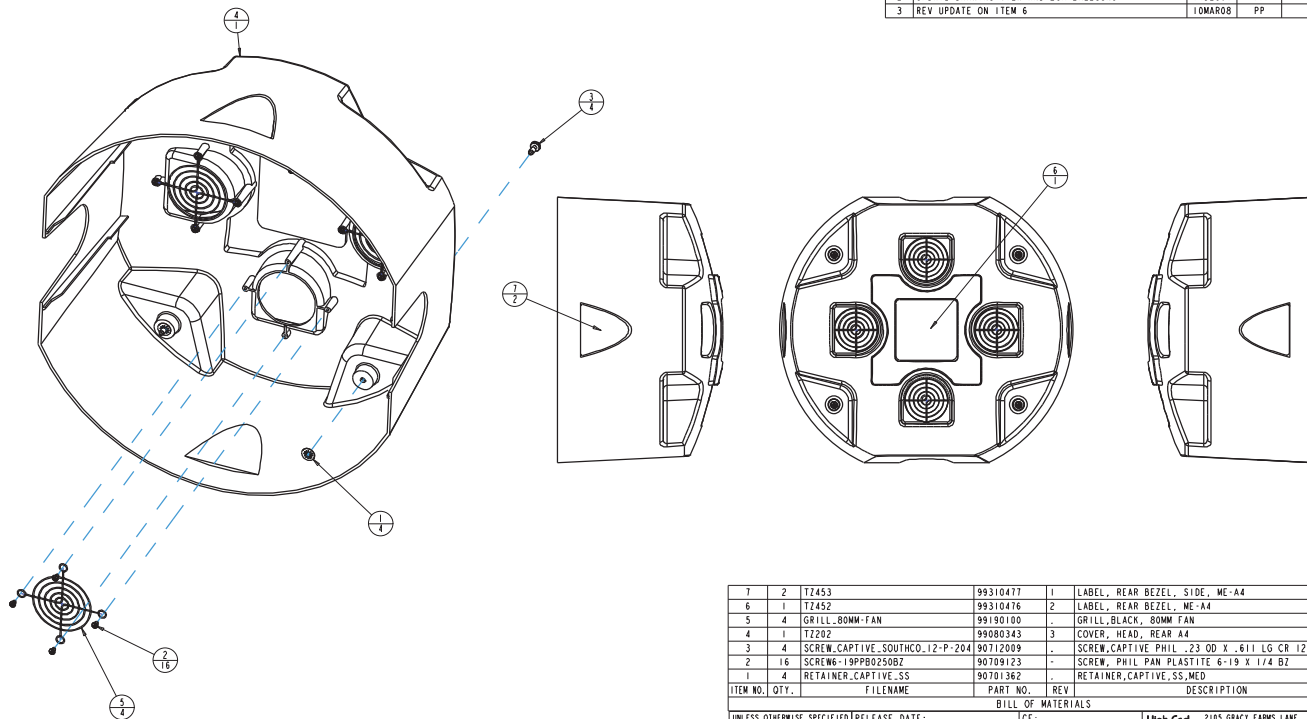
FRONT BEZEL IS SYMMETRIC ABOUT HORIZONTAL CENTERLINE,
NO NEED TO IDENTIFY TOP AND BOTTOM

PROPRIETARY NOTICE:
THIS DOCUMENT CONTAINS CONFIDENTIAL AND PROPRIETARY INFORMATION OF HIGH END SYSTEMS, INC., ALSO DBA LIGHTWAVE RESEARCH AND IS GIVEN TO THE RESEARCHER IN CONFIDENCE. THE RESEARCHER ACCEPTS AND AGREES THAT EXCEPT AS AUTHORIZED BY HIGH END SYSTEMS, THE RESEARCHER WILL NOT TENDRY THE USE OF THE DOCUMENT OR ANY COPIES THEREOF OR THE INFORMATION THEREIN, WILL NOT COPY OR REPRODUCE THE DOCUMENT, WILL NOT DISCLOSE TO OTHERS EITHER THE DOCUMENT OR THE INFORMATION THEREIN, AND WILL UPON COMPLETION OF THE WORK TO RETURN THE DOCUMENT, OR UPON DEMAND, RETURN THE DOCUMENT, WITHOUT RETAINING ANY OF THE INFORMATION CONTAINED THEREIN IN ANY FORM WHATSOEVER.

UNLESS OTHERWISE SPECIFIED:	RELEASE DATE:	CC:	High End	2105 GRACY FARMS LANE	 LIGHTWAVE RESEARCH
DIMENSIONAL TOLERANCES:	ENG: MIKE BELL	QA:		AUSTIN, TEXAS 78718	
0 PLACE DECIMAL: ±0.38	ME:			1523 836-2242	
1 PLACE DECIMAL: ±0.25	MG:	DRW: PETE PHILLIPS		FAX (512) 832-4128	
2 PLACE DECIMALS: ±0.13	MG:			***** http://www.highend.com	
ANGLES: ±0.5°	DESCRIPTION:				
FOR PAINTED PARTS REFER TO	ASSEMBLY: FRONT BEZEL, ME44				
ENG. SPEC. MANUAL W/ 0592	MATERIAL:				
ALL COMPONENTS, MATERIALS AND FINISHES TO BE RABS COMPLIANT	TSD:				
MIN. AMPL:	INTERPRET DIMENSIONS PER	SI	PART NO.	DRAWING NO.	REV.
FLATNESS:	ASME Y14.5M-1994	Metric	80450095	TZA032	-
THICKNESS:	THIRD ANGLE PROJECTION	A1	DO NOT SCALE	SCALE: 0,250	SHEET: 2 OF 2
VOLUME:	DIMENSIONS ARE IN MILLIMETERS				

TZA033

REV.	DESCRIPTION	DATE	ENG	ECO #	APPR
1	CREATE DRAWING	12OCT07	KLB		
2	UPDATE DRAWING VIEW AND BOM BALLOONS	14DEC07	PP		
3	REV UPDATE ON ITEM 6	10MAR08	PP		MB



ITEM NO.	QTY.	FILENAME	PART NO.	REV	DESCRIPTION
7	2	T2453	99310477	1	LABEL, REAR BEZEL, SIDE, ME-A4
6	1	T2452	99310476	2	LABEL, REAR BEZEL, ME-A4
5	4	GRILL_BOMM-FAN	99190100	-	GRILL, BLACK, BOMM FAN
4	1	T2202	99080343	3	COVER, HEAD, REAR A4
3	4	SCREW_CAPTURE_SOUTHCO_12-P-204	90712009	-	SCREW, CAPTIVE PHIL .23 OD X .611 LG CR 12-P-204
2	16	SCREW-19PPB0250B2	90709123	-	SCREW, PHIL PAN PLASTITE 6-19 X 1/4 BZ
1	4	RETAINER_CAPTURE_SS	90701362	-	RETAINER, CAPTIVE, SS, MID

UNLESS OTHERWISE SPECIFIED		RELEASE DATE:	CE:	High End	2105 GRACY FARMS LANE
DIMENSIONAL TOLERANCES:	ENG: KEITH BRADY	QA:			AUSTIN, TEXAS 78758
0 PLACE DECIMAL = ± 0.30	ME:				(512) 836-2242
1 PLACE DECIMAL = ± 0.25	MEG:	DRW: KEITH BRADY			FAX (512) 832-4128
2 PLACE DECIMAL = ± 0.13	DESCRIPTION:				***** http://www.highend.com
ANGLES = $\pm 0.5^\circ$	REAR BEZEL ASSEMBLY				
FOR PAINTED PARTS REFER TO	MATERIAL:				
ENG. SPEC. MANUAL 81-9392					
ALL COMPONENTS, MATERIALS AND					
FINISHES TO BE RoHS COMPLIANT					
FIN. DATE:	INTERPRET DIMENSIONS PER	SI	PART NO.	DRAWING NO.	REV.
FIN. ADDR:	ASME Y14.5M-1994	METRIC	TBD	TZA033	3
FIN. CHG:	THIRD ANGLE PROJECTION	A1			
FIN. CHG:	DIMENSIONS ARE IN MILLIMETERS				
VOLUME	DO NOT SCALE			SCALE: 0,240	SHEET: 1 OF 1

PROPRIETARY NOTICE
 THIS DOCUMENT CONTAINS CONFIDENTIAL AND PROPRIETARY INFORMATION OF HIGH END SYSTEMS, INC. (CASO D&L/OTWAVE RESEARCH) AND IS GIVEN TO THE RECEIVER IN CONFIDENCE. THE RECEIVER ACCEPTS AND AGREES THAT, EXCEPT AS AUTHORIZED BY HIGH END SYSTEMS, THE RECEIVER WILL NOT PERMIT THE USE OF THE DOCUMENT OR ANY COPY THEREOF OR THE INFORMATION THEREIN, WILL NOT COPY OR PERMIT COPYING, THE DOCUMENT WILL NOT DISCLOSE TO OTHERS EITHER THE DOCUMENT OR THE INFORMATION THEREIN, AND WILL UPON COMPLETION OF THE NEED TO RETURN THE DOCUMENT, OR UPON DEMAND, RETURN THE DOCUMENT WITHOUT RETAINING ANY OF THE INFORMATION CONTAINED THEREIN IN ANY FORM WHATSOEVER.